

FRIENDS
UNIVERSITY

Comparative Data Book

Fall 2012

Compendium to Friends University Fact Book

How to use this data book

The Friends University Comparative Data Book is designed to provide sources of information related to student, faculty, and university information in order to simplify the interpretation of the data presented in the annual Fact Book.

Data in this book is from various sources, all identified at the top of each page. Full texts of the data sources are available either on the OIRA MyFriends webpage or by request to OIRA.

To locate information about a specific topic, please refer to the INDEX at the back of this book. Each of the data sources where comparative data is available for the topic of interest will be identified by page number.

As this is the first version of a Friends University Comparative Data Book, there will be sources that are not included. We ask that you assist us in identifying sources of comparative data, if they do not appear in this volume. We will continue to expand and update this book each year.

If you have any questions regarding the Comparative Data Book, the University Fact Book, or any other information, please contact OIRA and we will be happy to assist you.

Happy comparing!

Stephanie J Hargrave, PhD
Director, Office of Institutional Research and Assessment (OIRA)
November 30, 2012

Student Debt vs. Average Income

	Avg. Income	Avg. Debt		Avg. Income	Avg. Debt		Avg. Income	Avg. Debt
AK	\$31,266	\$20,373	KY	\$31,826	\$16,897	NY	\$31,826	\$21,199
AL	\$33,643	\$20,666	LS	\$36,271	\$22,151	OH	\$35,511	\$22,049
AR	\$31,266	\$19,489	MA	\$50,735	\$20,220	OK	\$36,899	\$19,621
AZ	\$32,953	\$25,628	MD	\$48,091	\$17,599	OR	\$35,956	\$20,285
CA	\$31,266	\$18,687	ME	\$35,381	\$23,533	PA	\$40,265	\$23,626
CO	\$42,377	\$20,429	MI	\$35,299	\$23,135	RI	\$41,008	\$22,753
CT	\$56,248	\$22,092	MN	\$42,772	\$24,499	SC	\$31,884	\$20,112
DC	\$64,991	\$20,789	MO	\$35,228	\$19,129	SD	\$37,375	\$23,437
DE	\$40,852	\$17,509	MS	\$29,569	\$18,000	TN	\$34,330	\$19,031
FL	\$39,070	\$20,666	MT	\$34,256	\$19,691	TX	\$38,575	\$19,024
GA	\$33,975	\$17,375	NC	\$34,439	\$17,254	UT	\$30,291	\$13,299
HI	\$40,490	\$15,199	ND	\$39,321	\$21,899	VA	\$42,876	\$18,100
IA	\$36,680	\$26,210	NE	\$37,730	\$19,555	VT	\$38,880	\$24,321
ID	\$32,133	\$22,718	NH	\$42,830	\$25,466	WA	\$42,456	\$19,301
IL	\$42,397	\$18,569	NJ	\$50,919	\$21,787	WI	\$37,314	\$20,788
IN	\$34,103	\$21,530	NM	\$32,091	\$19,171	WY	\$49,719	\$16,005
KS	\$37,970	\$18,840	NV	\$40,353	\$16,957	WV	\$30,831	\$19,867

Percentage of Grads w/ Debt	
AR - 59%	ND - 80%
AZ - 58%	NE - 67%
CA - 49%	NH - 73%
CO - 53%	NJ - 67%
CT - 58%	NM - 57%
DC - 64%	NV - 48%
DE - 54%	NY - 63%
FL - 54%	OH - 68%
GA - 50%	OK - 57%
HI - 35%	OR - 67%
IA - 74%	PA - 71%
ID - 68%	RI - 66%
IL - 58%	SC - 62%
IN - 62%	SD - 81%
KS - 66%	TN - 47%
KY - 65%	TX - 58%
LS - 59%	UT - 42%
MA - 62%	VA - 59%
ME - 68%	VT - 63%
MI - 64%	WA - 61%
MO - 65%	WI - 67%
MS - 63%	WV - 71%
	WY - 49%

Student debt data from
Petersen's Undergraduate Finan-
cial Database 07/08

NCES and KICA

NCES Comparison Group

Baker University
Central Methodist University
Colorado Christian University
Elmhurst College
Southern Nazarene University
University of Mary

KICA Comparison Group

Baker University
Benedictine University
Bethany College
Bethel College
Central College
donnelly College
Hesston College
Kansas Wesleyan University
Manhattan Christian College
McPherson College
MidAmerica Nazarene University
Newman University
Ottawa University
St Mary University
Southwestern College
Sterling College
Tabor College

NCES and KICA FY2010

Variable Name	Friends University	NCES Comparison Group Median	KICA Median
Enrollment, by student level: Fall 2010			
Total	2,782	3,025	588
Undergraduate	1,944	2,256	563
First-time, degree/certificate-seeking undergraduate	206	334	
Transfer-in, degree/certificate-seeking undergraduate	306	164	
Continuing, degree/certificate-seeking undergraduate	1,421	1,655	
Nondegree/certificate-seeking undergraduate	11	65	
Graduate	838	398	51
Full-time enrollment, by student level: Fall 2010			
Total full-time	1,697	1,783	
Full-time undergraduate	1,531	1,388	
Full-time, first-time, degree/certificate-seeking undergraduate	199	302	
Full-time, transfer-in, degree/certificate-seeking undergraduate	243	138	
Full-time, continuing, degree/certificate-seeking undergraduate	1,088	1,067	
Full-time, nondegree/certificate-seeking undergraduate	1	2	
Full-time graduate	166	227	
Part-time enrollment, by student level: Fall 2010			
Total part-time	1,085	746	
Part-time undergraduate	413	425	
Part-time, first-time, degree/certificate-seeking undergraduate	7	2	
Part-time, transfer-in, degree/certificate-seeking undergraduate	63	9	
Part-time, continuing, degree/certificate-seeking undergraduate	333	309	
Part-time, nondegree/certificate-seeking undergraduate	10	63	
Part-time graduate	672	274	
Percent of all undergraduate students enrolled, by race/ethnicity: Fall 2010			
American Indian or Alaska Native	2	1	
Asian	2	2	
Black or African American	10	6	
Hispanic/Latino	4	5	
Native Hawaiian or other Pacific Islander	0	0	
White	66	77	
Two or more races	1	1	
Race/ethnicity unknown	15	5	
Nonresident alien	0	1	
Percent of all graduate students enrolled, by race/ethnicity: Fall 2010			
American Indian or Alaska Native	1	1	
Asian	3	2	
Black or African American	8	6	
Hispanic/Latino	4	4	
Native Hawaiian or other Pacific Islander	0	0	
White	73	75	
Two or more races	1	1	
Race/ethnicity unknown	10	7	
Nonresident alien	0	0	

NCES and KICA FY2010

Variable Name	Friends University	NCES Comparison Group Median	KICA Median
Percent distribution of core expenses, by function: Fiscal year 2010			
Instruction	36	45	
Research	0	0	
Public service	0	0	
Academic support	14	10	
Institutional support	24	20	
Student services	26	21	
Other core expenses	0	2	
Endowment per FTE	19,071	8,801	
Student-to-faculty ratio: Fall 2010			
Student-to-faculty ratio	13	15	13

NCES and KICA FY2010

Variable Name	Friends University	NCES Comparison Group Median	KICA Median
Number of first time freshman applicants, admissions, and students enrolled full and part time: Fall 2010			
Applicants	707	1,298	753
Admissions	430	1,231	424
Enrolled full time	199	362	160*
Enrolled part time	7	1	
Percent of applicants admitted, and percent of admissions enrolled by full- and part-time status: Fall 2010			
Admitted	61	65	57
Enrolled full time	46	29	
Enrolled part time	2	0	
Percentile ACT scores of first-time, degree/certificate-seeking undergraduate students: Fall 2010			
25th percentile Composite	18	20	
75th percentile Composite	25	26	
25th percentile English	17	20	
75th percentile English	25	26	
25th percentile Math	17	20	
75th percentile Math	25	26	
Average ACT Score	22		22

*includes both PT and FT

NCES and KICA FY 2010

Variable Name	Friends University	NCES Comparison Group Median	KICA Median
Number of degrees awarded, by level: 2009-10			
Master's	345	241	
Bachelor's	593	477	
Associate's	32	3	
Graduation rate and transfer-out rate (2004 cohort); graduation rate cohort as a percent of total entering students and retention rates of first-time students (Fall 2010)			
Graduation rate	29	47	36
Full-time retention rate	65	73	37
Bachelor's degree graduation rates of full-time, first-time, degree/certificate seeking undergraduates within 4 years, 6 years: 2002 cohort			
4 years	24	36	36
6 years	41	56	37

Council of Independent Colleges Comparisons

Comparative Group Definitions

<u>Region</u>	State
Far West	Alaska, California, Hawaii, Nevada, Oregon, Washington
Mid East	Delaware, District of Columbia, Maryland, New Jersey, New York, Pennsylvania
Midwest	Illinois, Indiana, Iowa, Michigan, Minnesota, Missouri, Ohio, Wisconsin
New England	Connecticut, Maine, Massachusetts, New Hampshire, Rhode Island, Vermont
Southeast	Alabama, Arkansas, Florida, Georgia, Kentucky, Louisiana, Mississippi, North Carolina, South Carolina, Tennessee, Virginia, West Virginia
West	Arizona, Colorado, Idaho, Kansas, Montana, Nebraska, New Mexico, North Dakota, Oklahoma, South Dakota, Texas, Utah, Wyoming

Council of Independent Colleges Comparisons

Comparative Group Definitions

GROUP 1 (n=5)

NAME	STATE
Baker University	KS
Central Methodist University	MO
Colorado Christian University	CO
Elmhurst College	IL
University of Mary	ND

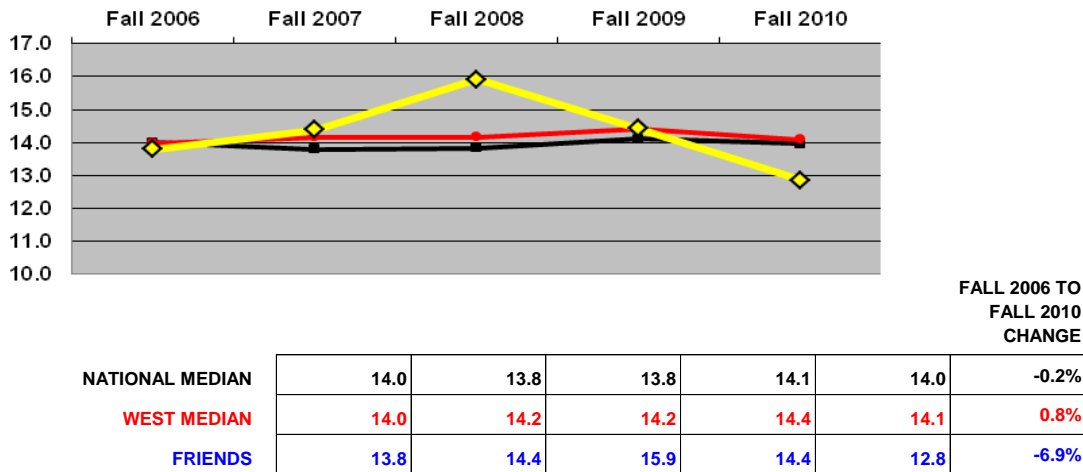
GROUP 2 (n=30)

NAME	STATE
Bellarmino University	KY
Brenau University	GA
California Lutheran University	CA
DeSales University	PA
Dominican University	IL
D'Youville College	NY
Fontbonne University	MO
Holy Family University	PA
Lawrence Technological University	MI
Le Moyne College	NY
Madonna University	MI
Manhattanville College	NY
Marian University	WI
Marymount University	VA
Maryville University of Saint Louis	MO
Marywood University	PA
Medaille College	NY
Nazareth College	NY
Piedmont College	GA
Rockhurst University	MO
Rollins College	FL
Saint Mary's College of California	CA
Southwest Baptist University	MO
St. Bonaventure University	NY
St. Thomas University	FL
University of Dallas	TX
University of Mary	ND
University of St. Francis	IL
University of St. Thomas	TX
William Carey University	MS

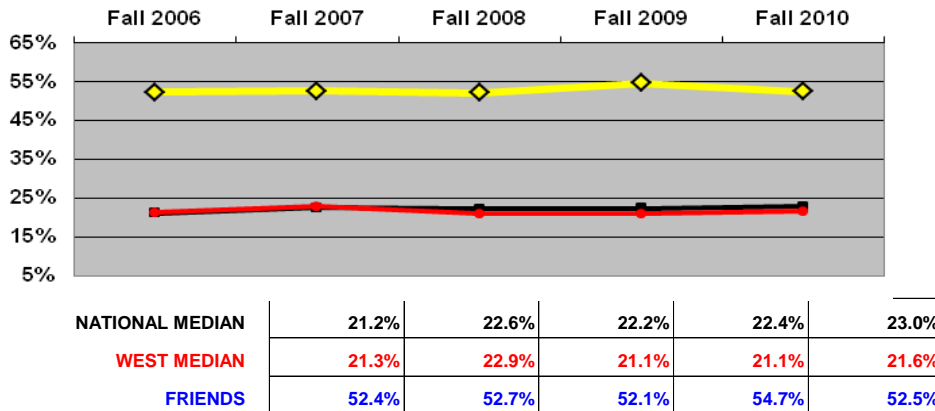
Council of Independent Colleges Comparisons

KIT TRENDS: FACULTY

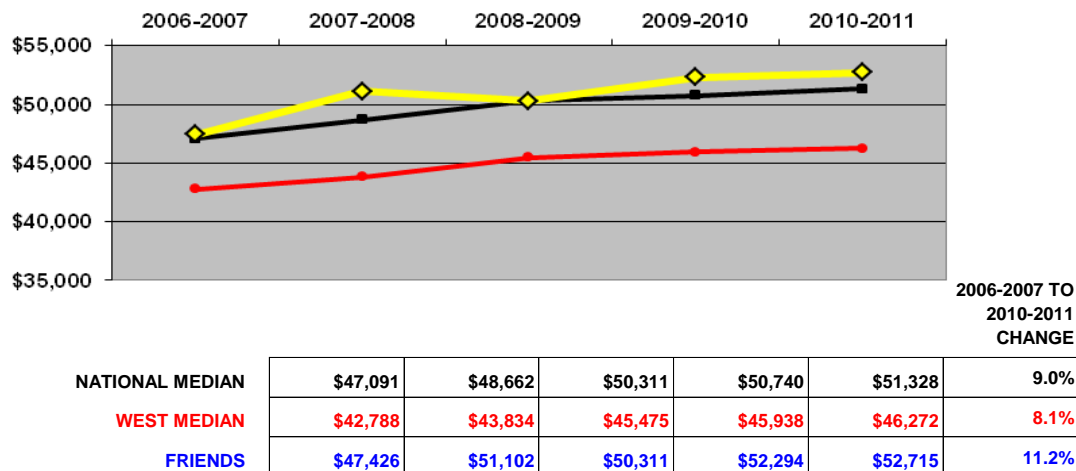
STUDENT/FACULTY RATIO



PART-TIME FACULTY (%)

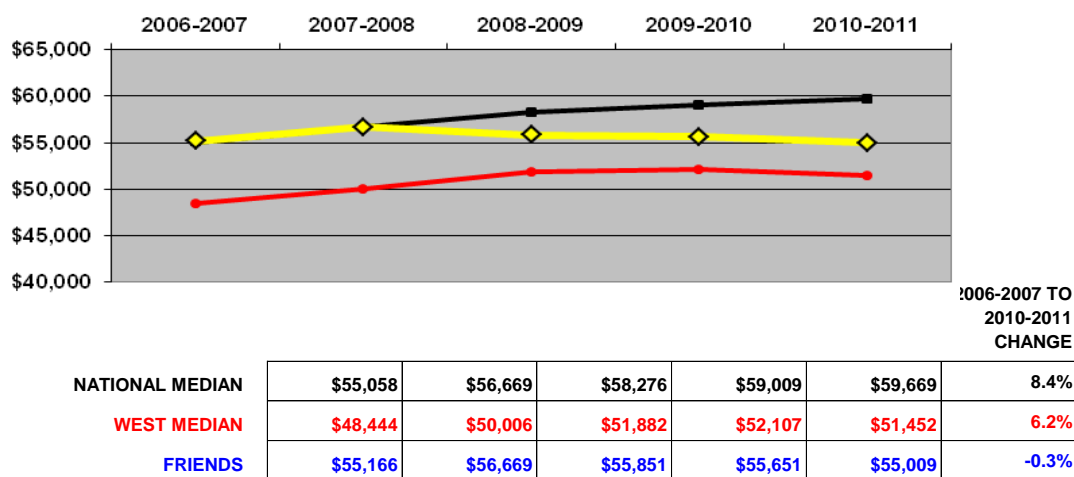


ASSISTANT PROFESSOR AVERAGE SALARY (\$) (EQUATED TO A 9-MONTH CONTRACT)

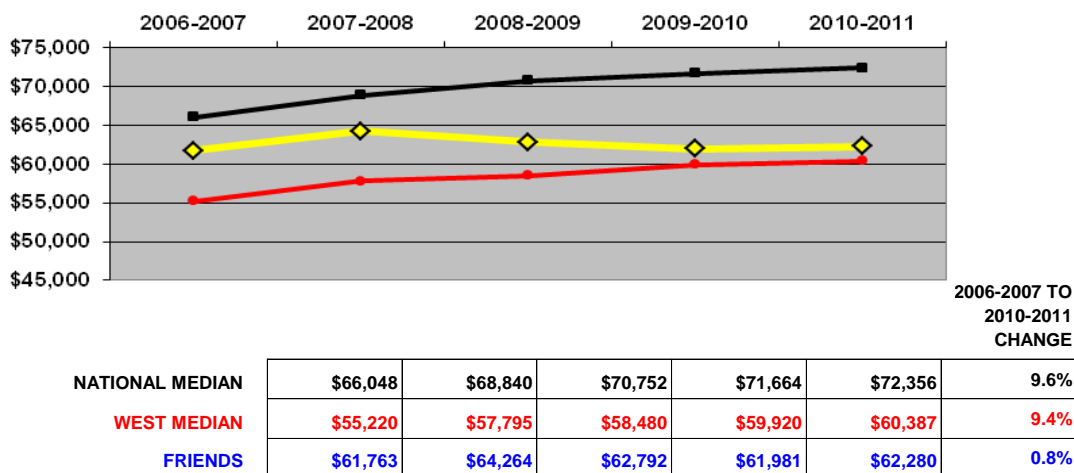


Council of Independent Colleges Comparisons

ASSOCIATE PROFESSOR AVERAGE SALARY (\$) (EQUATED TO A 9-MONTH CONTRACT)

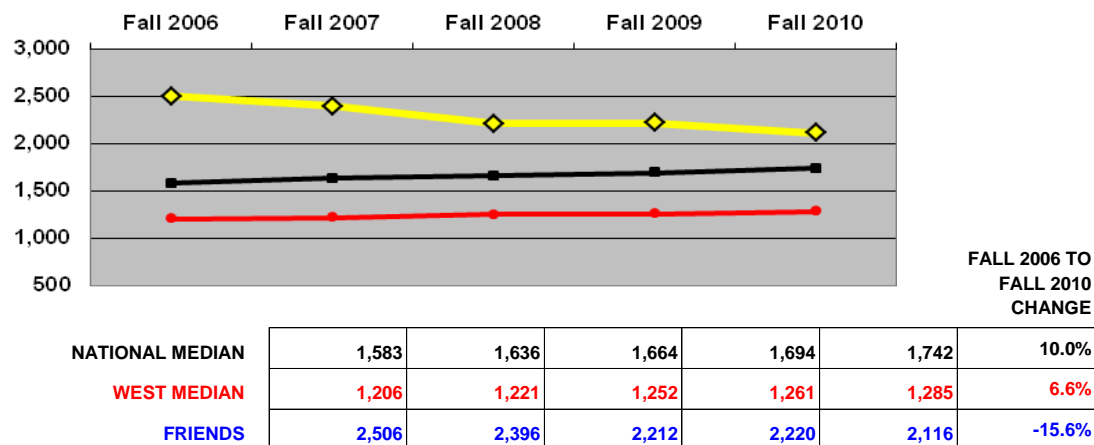


PROFESSOR AVERAGE SALARY (\$) (EQUATED TO A 9-MONTH CONTRACT)

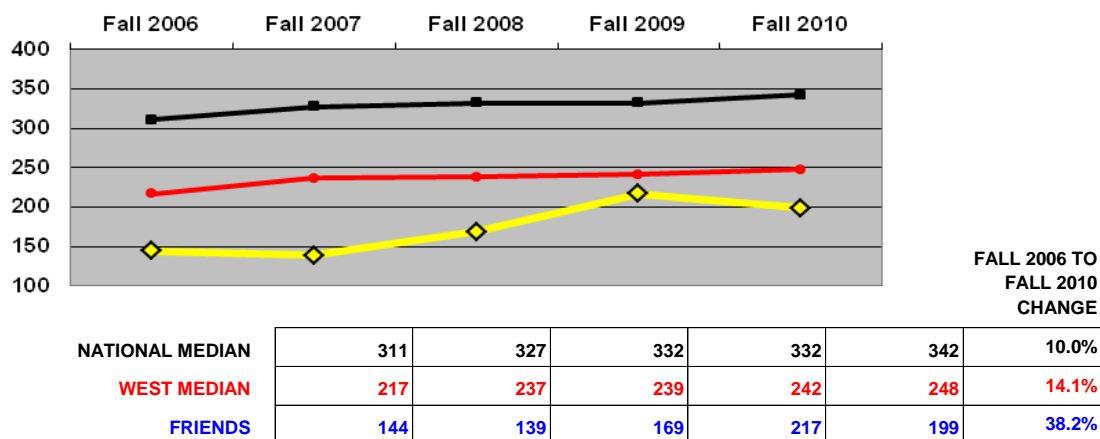


Council of Independent Colleges Comparisons

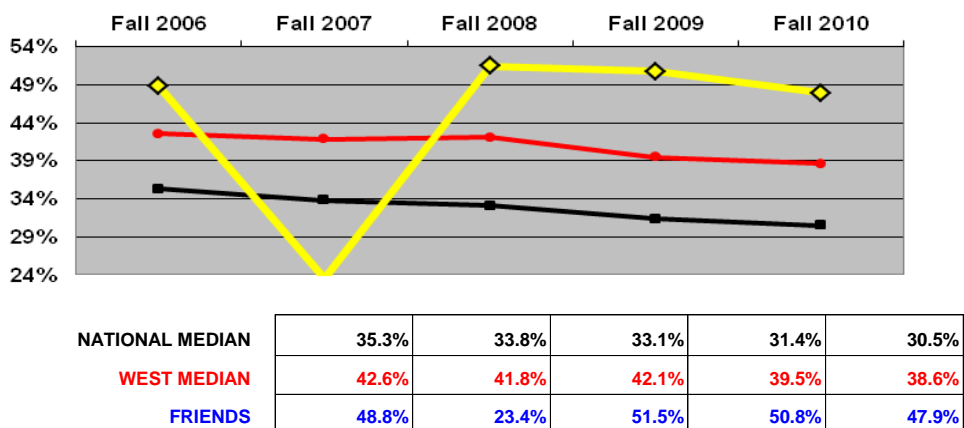
TOTAL FALL ENROLLMENT (FALL FTE)



FIRST-YEAR ENROLLMENT (FULL-TIME UNDERGRADUATE)

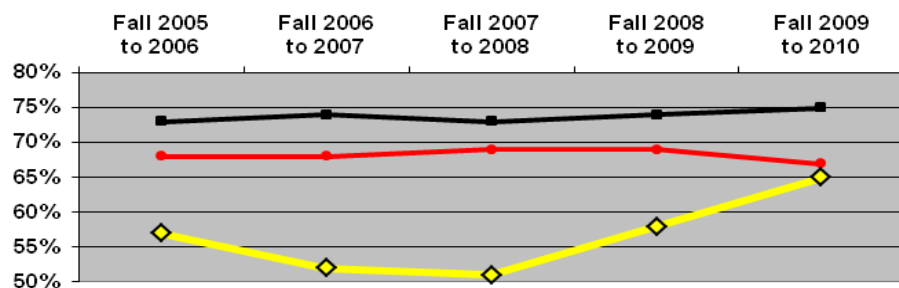


ADMISSIONS YIELD RATE (%) (ADMITTED TO ENROLLED)



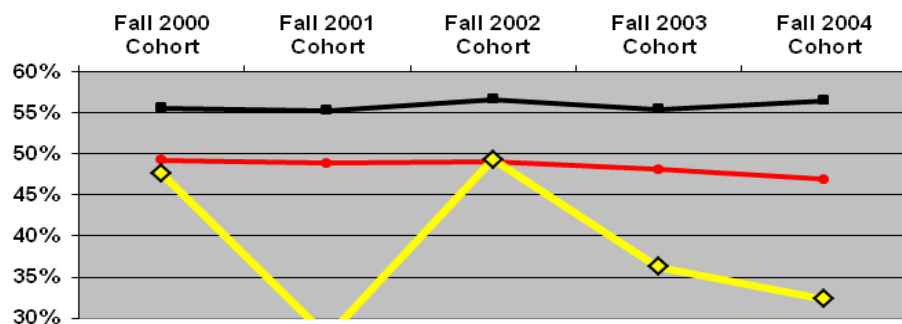
Council of Independent Colleges Comparisons

RETENTION RATE (%) (FIRST TO SECOND YEAR)



NATIONAL MEDIAN	73%	74%	73%	74%	75%
WEST MEDIAN	68%	68%	69%	69%	67%
FRIENDS	57%	52%	51%	58%	65%

GRADUATION RATE (%) (SIX-YEAR COHORT RATE)

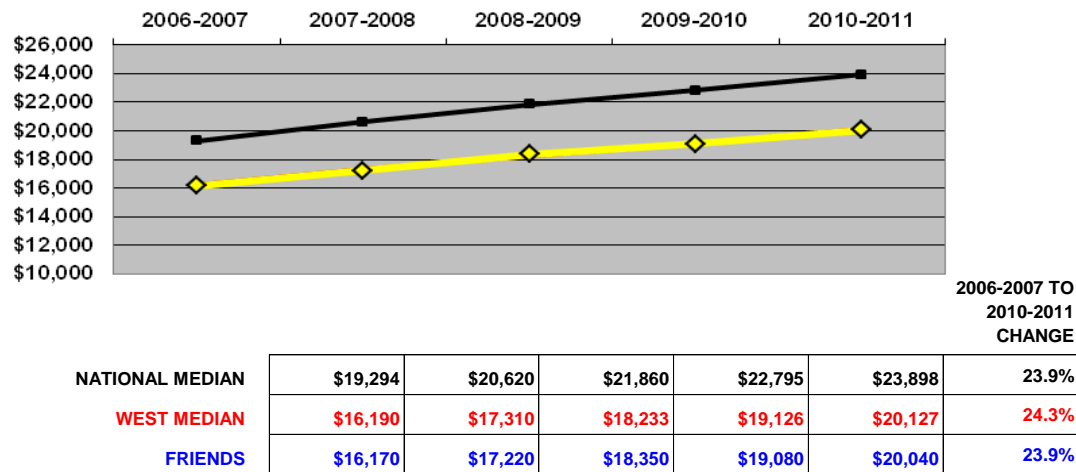


NATIONAL MEDIAN	55.6%	55.3%	56.7%	55.5%	56.5%
WEST MEDIAN	49.2%	48.8%	49.1%	48.1%	46.9%
FRIENDS	47.6%	27.7%	49.3%	36.2%	32.4%

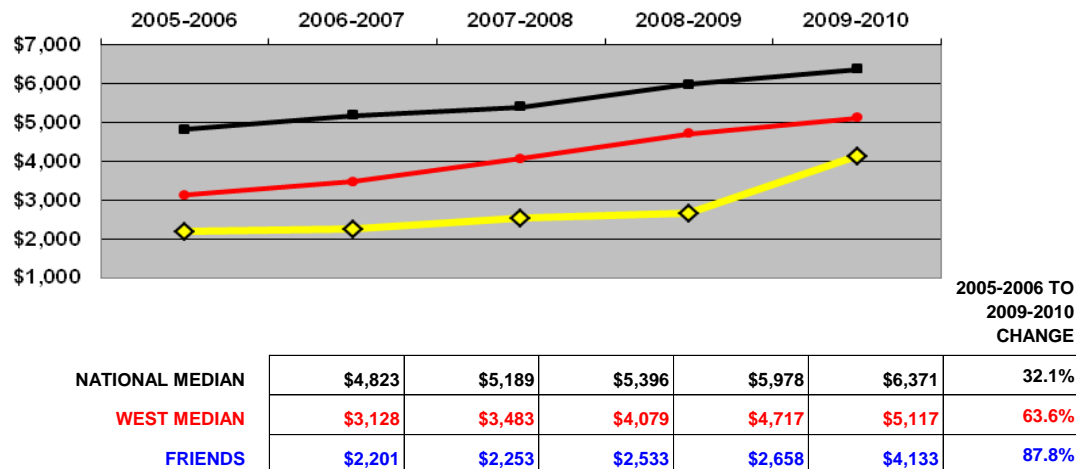
Council of Independent Colleges Comparisons

KIT TRENDS: TUITION REVENUE AND FINANCIAL AID

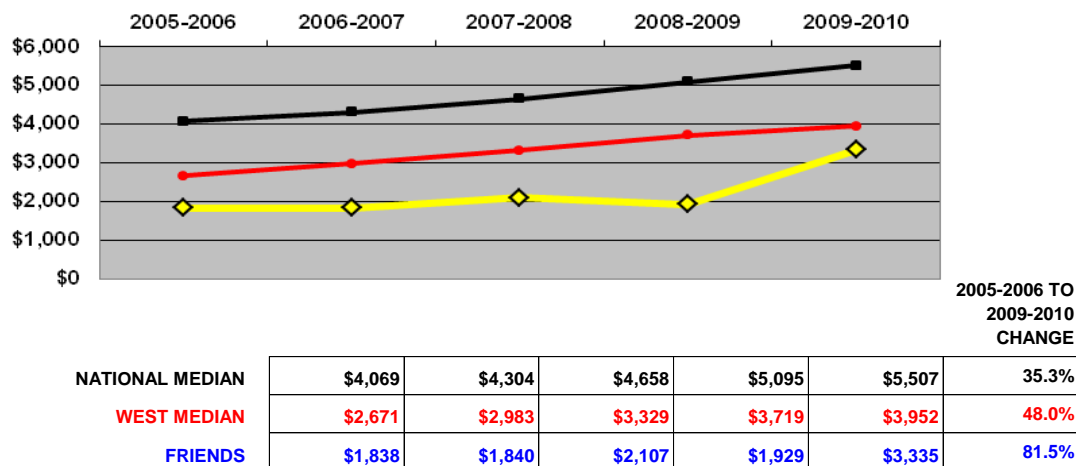
TUITION PRICE (\$) (PUBLISHED TUITION AND FEES FOR FULL-TIME, FIRST-YEAR STUDENTS)



TOTAL INSTITUTIONAL AID PER STUDENT (\$) (FUNDED AND UNFUNDED)

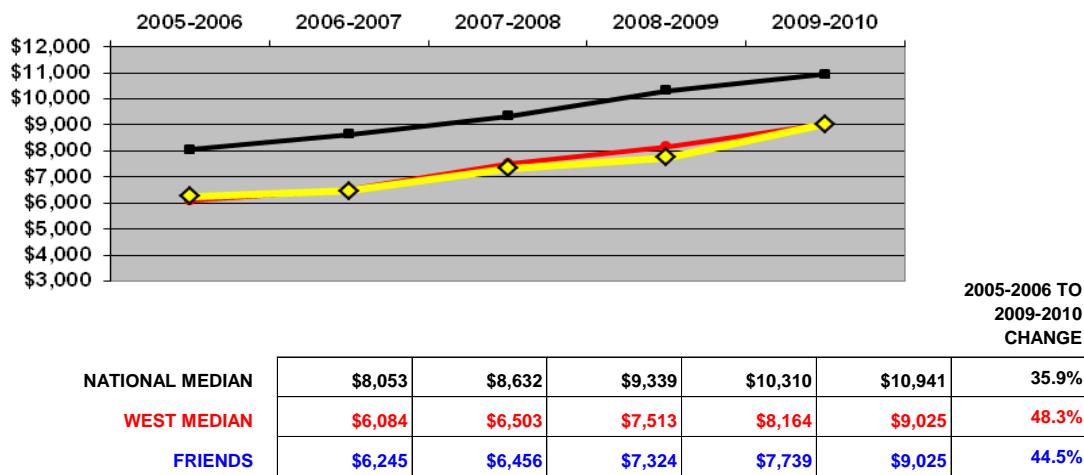


UNFUNDED INSTITUTIONAL AID PER STUDENT (\$)

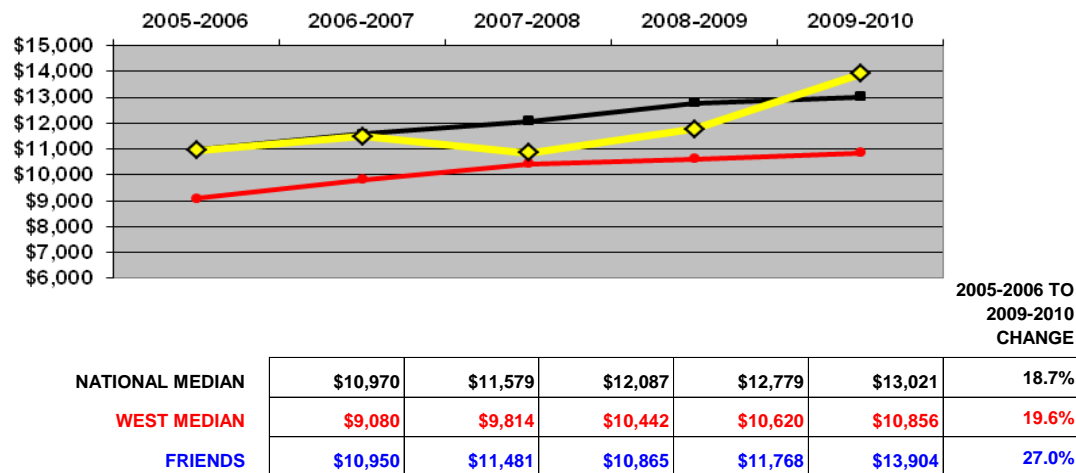


Council of Independent Colleges Comparisons

AVERAGE INSTITUTIONAL AID FOR FIRST-YEAR STUDENTS (\$)

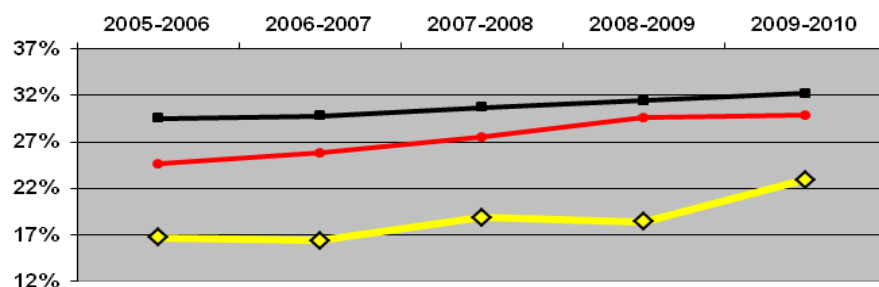


NET TUITION REVENUE PER STUDENT (\$) (TUITION AND FEES LESS INSTITUTIONAL AID)



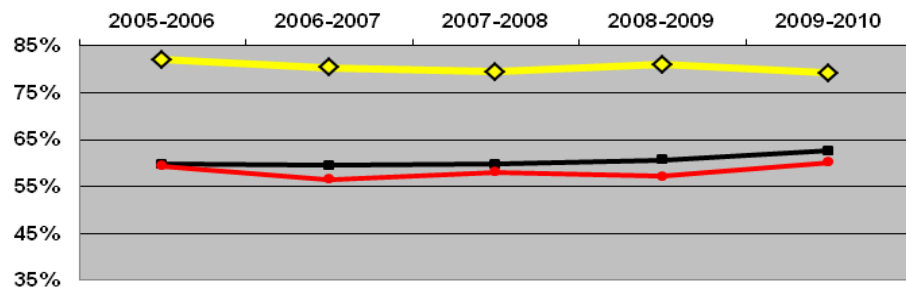
Council of Independent Colleges Comparisons

DISCOUNT RATE (%) (INSTITUTIONAL FINANCIAL AID DIVIDED BY TUITION AND FEE REVENUE)



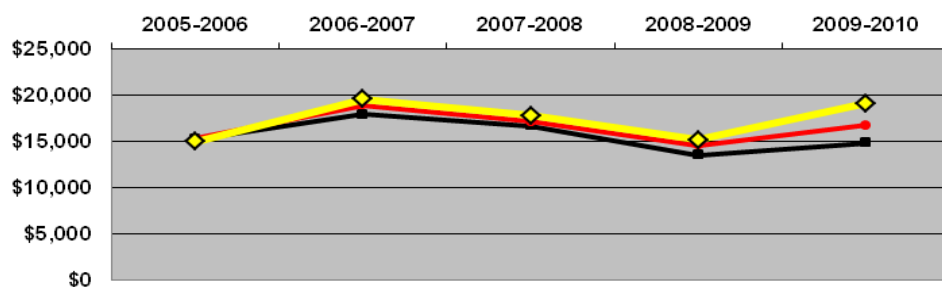
NATIONAL MEDIAN	29.6%	29.8%	30.7%	31.4%	32.2%
WEST MEDIAN	24.7%	25.8%	27.5%	29.6%	29.8%
FRIENDS	16.7%	16.4%	18.9%	18.4%	22.9%

TUITION DEPENDENCY (%) (PERCENT OF TOTAL EXPENSES COVERED BY NET TUITION)



NATIONAL MEDIAN	59.7%	59.5%	59.7%	60.6%	62.6%
WEST MEDIAN	59.4%	56.5%	58.1%	57.1%	60.1%
FRIENDS	82.0%	80.4%	79.4%	81.0%	79.2%

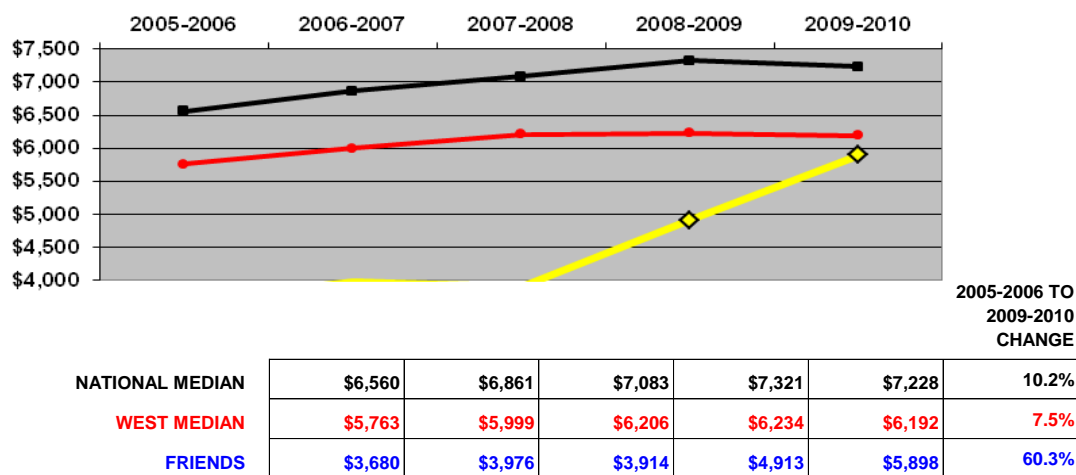
ENDOWMENT ASSETS PER STUDENT (\$)



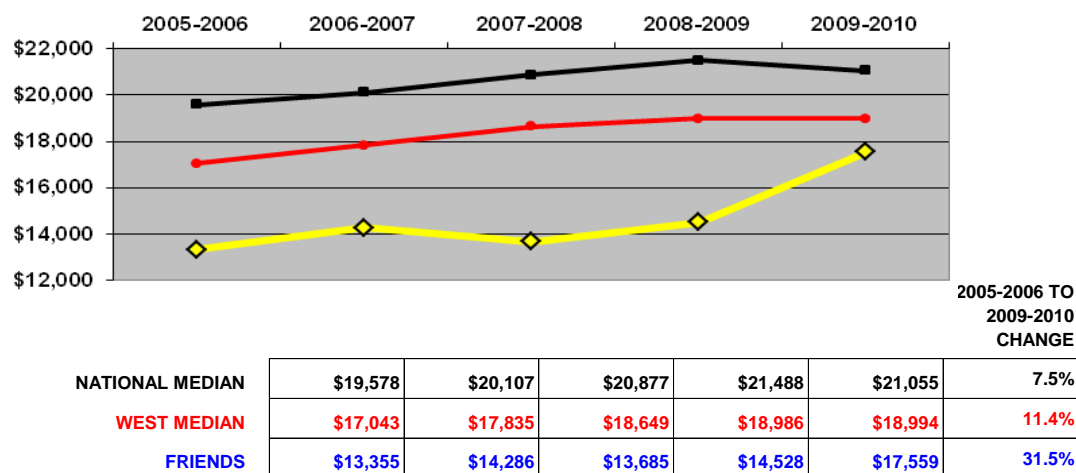
						2005-2006 TO 2009-2010 CHANGE
NATIONAL MEDIAN	\$15,227	\$17,884	\$16,672	\$13,521	\$14,799	-2.8%
WEST MEDIAN	\$15,302	\$18,916	\$17,111	\$14,567	\$16,702	9.1%
FRIENDS	\$14,953	\$19,576	\$17,804	\$15,111	\$19,071	27.5%

Council of Independent Colleges Comparisons

INSTRUCTIONAL EXPENSE PER STUDENT (\$)



TOTAL EXPENSE PER STUDENT (\$)



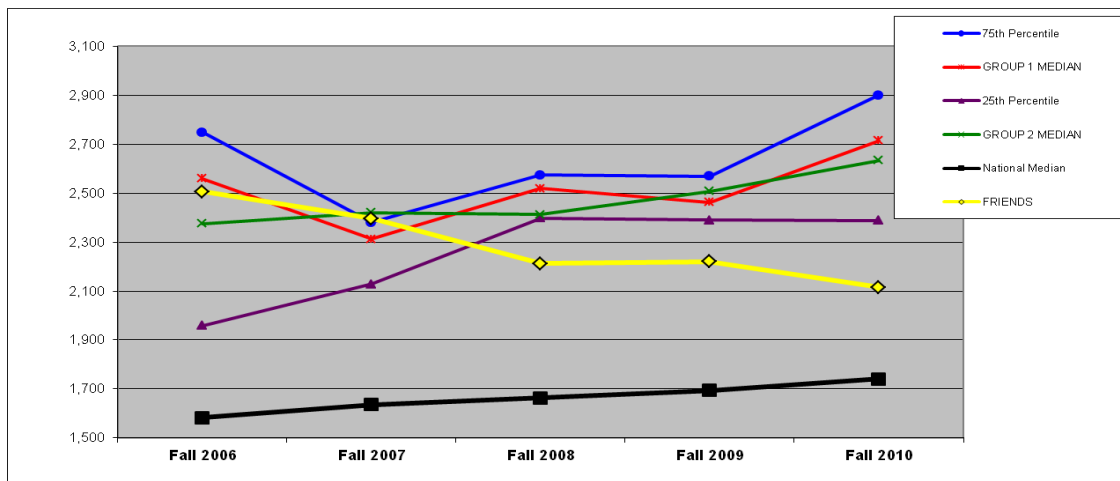
Council of Independent Colleges Comparisons

TOTAL ENROLLMENT: BY COMPARISON GROUP (1G)

DEFINITION: Total fall full-time equivalent (FTE) enrollment, including undergraduate, graduate, and first-professional students.

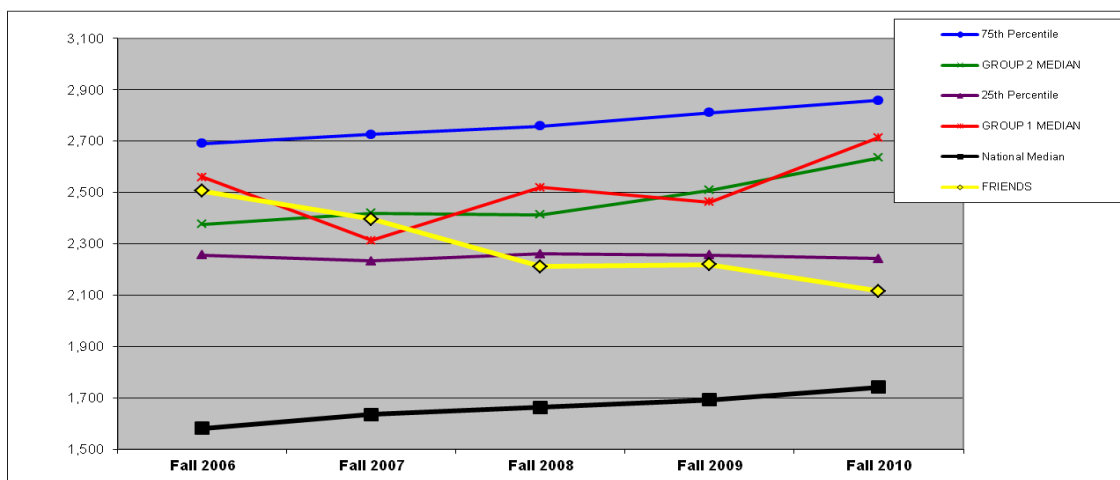
	Fall 2006	Fall 2007	Fall 2008	Fall 2009	Fall 2010	Y1 to Y5 Change
FRIENDS	2,506	2,396	2,212	2,220	2,116	-15.6%

GROUP 1 (n=5). To facilitate comparison between groups, the medians of both groups appear on each chart.



	Fall 2006	Fall 2007	Fall 2008	Fall 2009	Fall 2010	Y1 to Y5 Change
75th Percentile	2,748	2,381	2,575	2,570	2,901	5.6%
GROUP 1 MEDIAN	2,560	2,313	2,519	2,462	2,714	6.0%
25th Percentile	1,959	2,128	2,398	2,390	2,388	21.9%
GROUP 2 MEDIAN	2,376	2,420	2,414	2,509	2,635	10.9%
National Median	1,583	1,636	1,664	1,694	1,742	10.0%
FRIENDS	2,506	2,396	2,212	2,220	2,116	-15.6%

GROUP 2 (n=30).



	Fall 2006	Fall 2007	Fall 2008	Fall 2009	Fall 2010	Y1 to Y5 Change
75th Percentile	2,691	2,727	2,758	2,811	2,858	6.2%
GROUP 2 MEDIAN	2,376	2,420	2,414	2,509	2,635	10.9%
25th Percentile	2,256	2,234	2,261	2,256	2,243	-0.6%
GROUP 1 MEDIAN	2,560	2,313	2,519	2,462	2,714	6.0%
National Median	1,583	1,636	1,664	1,694	1,742	10.0%
FRIENDS	2,506	2,396	2,212	2,220	2,116	-15.6%

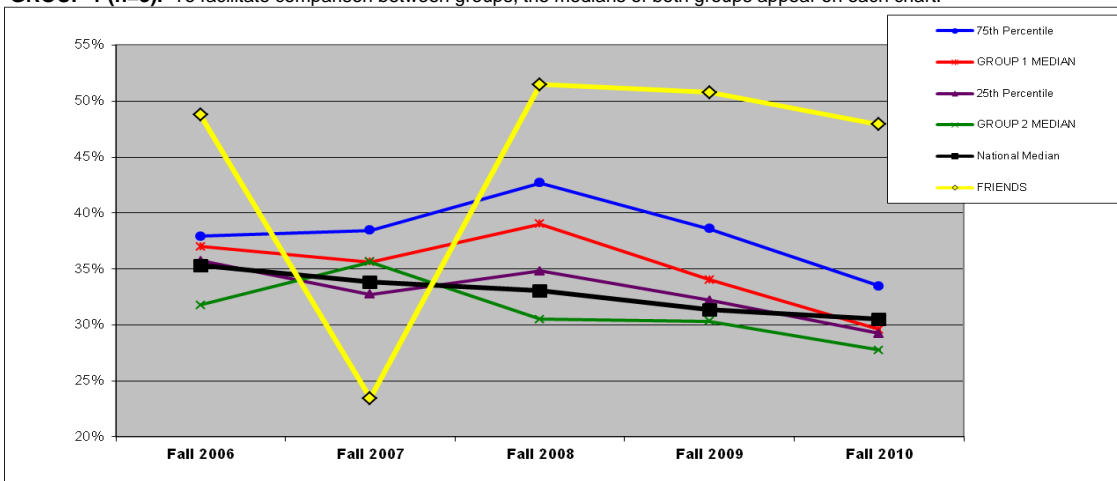
Council of Independent Colleges Comparisons

ADMISSIONS YIELD RATE (%): BY COMPARISON GROUP (3G)

DEFINITION: Percentage of admitted students who enrolled. (The year indicated is the year of the Institutional Characteristics IPEDS Survey. Institutions had the option of reporting data for the current or prior year. Only data from institutions reporting current year data for all five years were used in the comparisons.)

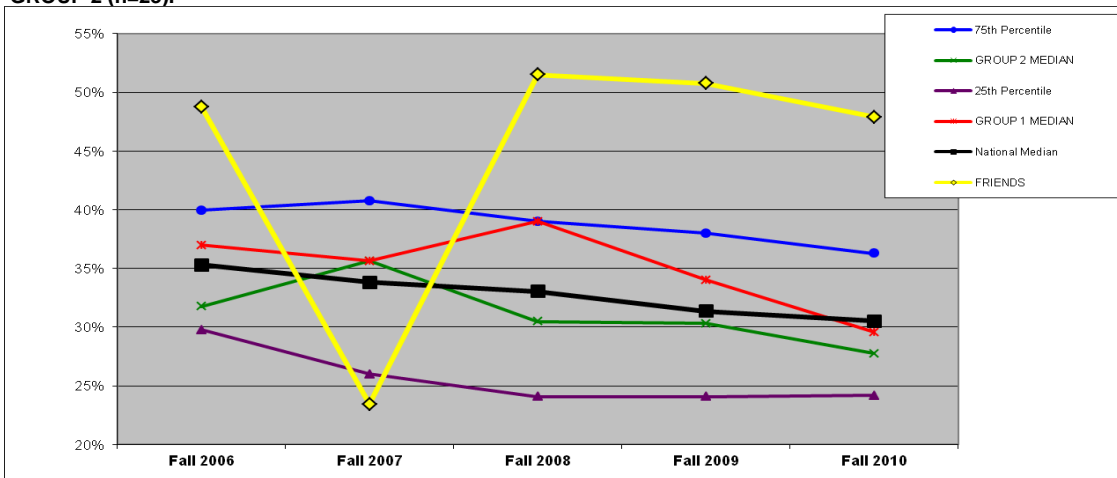
	Fall 2006	Fall 2007	Fall 2008	Fall 2009	Fall 2010
FRIENDS	48.8%	23.4%	51.5%	50.8%	47.9%

GROUP 1 (n=3). To facilitate comparison between groups, the medians of both groups appear on each chart.



	Fall 2006	Fall 2007	Fall 2008	Fall 2009	Fall 2010
75th Percentile	38%	38%	43%	39%	33%
GROUP 1 MEDIAN	37%	36%	39%	34%	30%
25th Percentile	36%	33%	35%	32%	29%
GROUP 2 MEDIAN	32%	36%	30%	30%	28%
National Median	35.3%	33.8%	33.1%	31.4%	30.5%
FRIENDS	48.8%	23.4%	51.5%	50.8%	47.9%

GROUP 2 (n=23).



	Fall 2006	Fall 2007	Fall 2008	Fall 2009	Fall 2010
75th Percentile	40%	41%	39%	38%	36%
GROUP 2 MEDIAN	32%	36%	30%	30%	28%
25th Percentile	30%	26%	24%	24%	24%
GROUP 1 MEDIAN	37%	36%	39%	34%	30%
National Median	35.3%	33.8%	33.1%	31.4%	30.5%
FRIENDS	48.8%	23.4%	51.5%	50.8%	47.9%

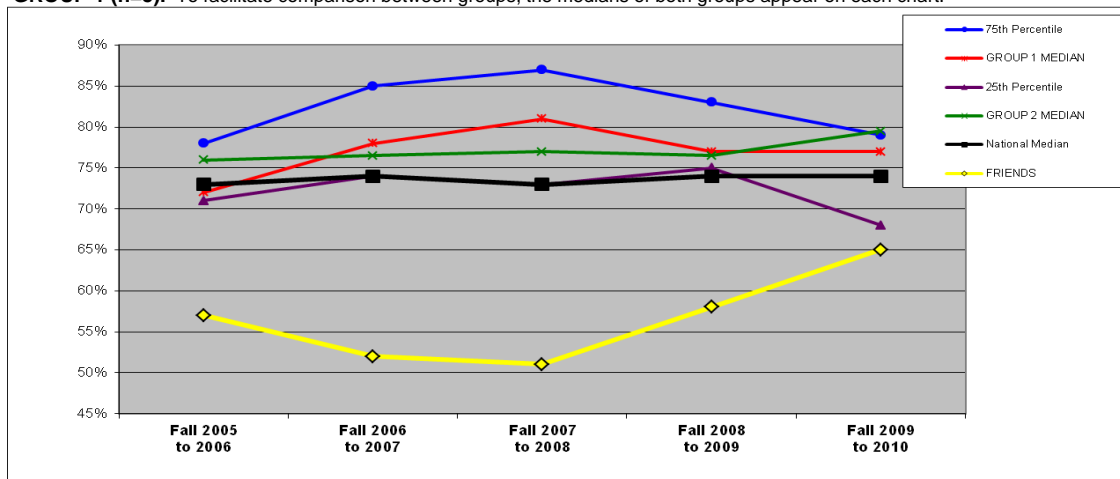
Council of Independent Colleges Comparisons

RETENTION RATE (%): BY COMPARISON GROUP (4G)

DEFINITION: The first to second year retention rate is the percentage of the fall full-time cohort (minus exclusions) that re-enrolled at the institution as either full- or part-time students in the fall of the next year.

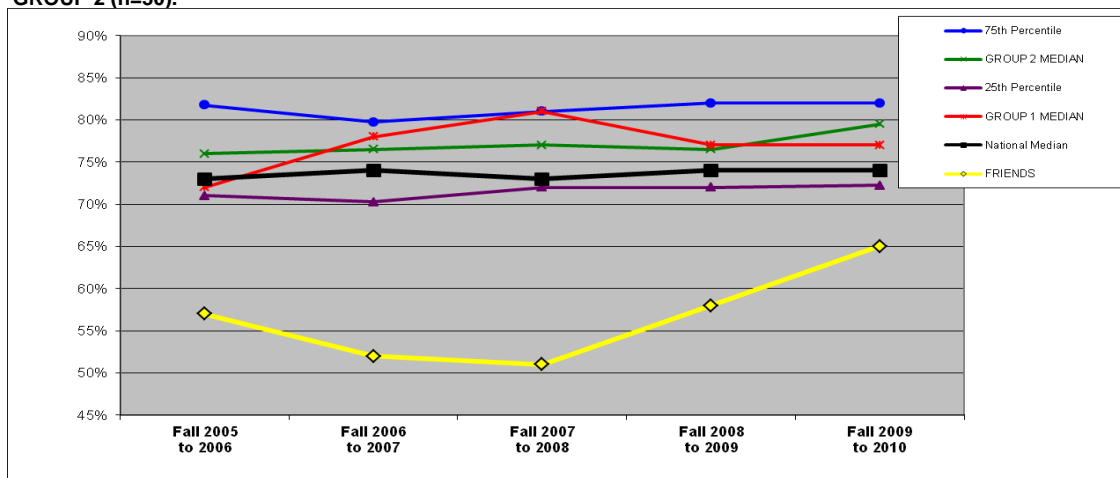
	Fall 2005 to 2006	Fall 2006 to 2007	Fall 2007 to 2008	Fall 2008 to 2009	Fall 2009 to 2010
FRIENDS	57%	52%	51%	58%	65%

GROUP 1 (n=5). To facilitate comparison between groups, the medians of both groups appear on each chart.



	Fall 2005 to 2006	Fall 2006 to 2007	Fall 2007 to 2008	Fall 2008 to 2009	Fall 2009 to 2010
75th Percentile	78%	85%	87%	83%	79%
GROUP 1 MEDIAN	72%	78%	81%	77%	77%
25th Percentile	71%	74%	73%	75%	68%
GROUP 2 MEDIAN	76%	77%	77%	77%	80%
National Median	73%	74%	73%	74%	74%
FRIENDS	57%	52%	51%	58%	65%

GROUP 2 (n=30).



	Fall 2005 to 2006	Fall 2006 to 2007	Fall 2007 to 2008	Fall 2008 to 2009	Fall 2009 to 2010
75th Percentile	82%	80%	81%	82%	82%
GROUP 2 MEDIAN	76%	77%	77%	77%	80%
25th Percentile	71%	70%	72%	72%	72%
GROUP 1 MEDIAN	72%	78%	81%	77%	77%
National Median	73%	74%	73%	74%	74%
FRIENDS	57%	52%	51%	58%	65%

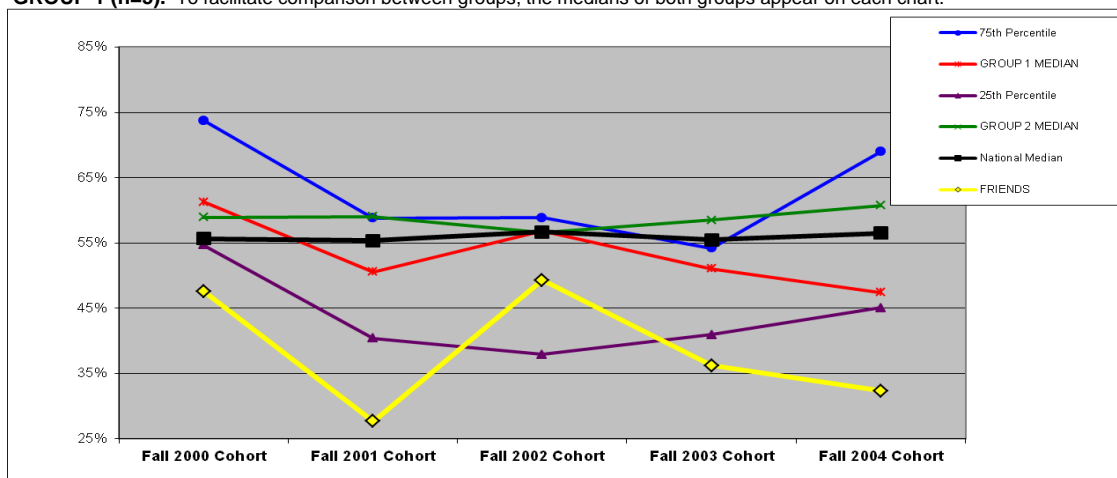
Council of Independent Colleges Comparisons

GRADUATION RATE (%): BY COMPARISON GROUP (5G)

DEFINITION: The six-year, cohort graduation rate for full-time, first-time degree-seeking undergraduate students. For example, the Fall 2000 Cohort rate is the percentage that graduated by end of Summer 2006.

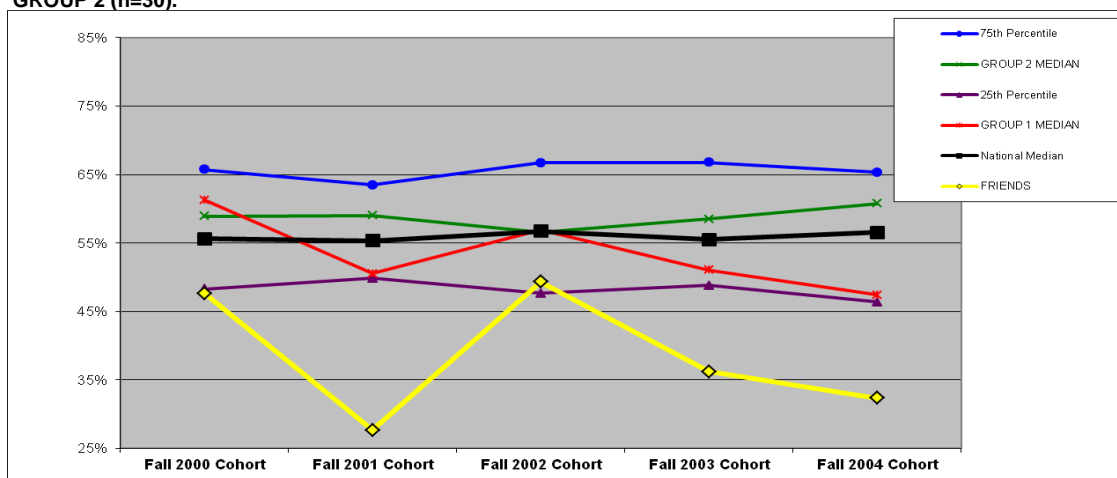
	Fall 2000 Cohort	Fall 2001 Cohort	Fall 2002 Cohort	Fall 2003 Cohort	Fall 2004 Cohort
FRIENDS	47.6%	27.7%	49.3%	36.2%	32.4%

GROUP 1 (n=5). To facilitate comparison between groups, the medians of both groups appear on each chart.



	Fall 2000 Cohort	Fall 2001 Cohort	Fall 2002 Cohort	Fall 2003 Cohort	Fall 2004 Cohort
75th Percentile	73.8%	58.8%	58.9%	54.2%	69.0%
GROUP 1 MEDIAN	61.3%	50.5%	56.9%	51.0%	47.4%
25th Percentile	54.7%	40.4%	37.9%	40.9%	45.1%
GROUP 2 MEDIAN	58.9%	59.0%	56.5%	58.5%	60.8%
National Median	55.6%	55.3%	56.7%	55.5%	56.5%
FRIENDS	47.6%	27.7%	49.3%	36.2%	32.4%

GROUP 2 (n=30).



	Fall 2000 Cohort	Fall 2001 Cohort	Fall 2002 Cohort	Fall 2003 Cohort	Fall 2004 Cohort
75th Percentile	65.7%	63.5%	66.7%	66.8%	65.3%
GROUP 2 MEDIAN	58.9%	59.0%	56.5%	58.5%	60.8%
25th Percentile	48.3%	49.8%	47.6%	48.8%	46.4%
GROUP 1 MEDIAN	61.3%	50.5%	56.9%	51.0%	47.4%
National Median	55.6%	55.3%	56.7%	55.5%	56.5%
FRIENDS	47.6%	27.7%	49.3%	36.2%	32.4%

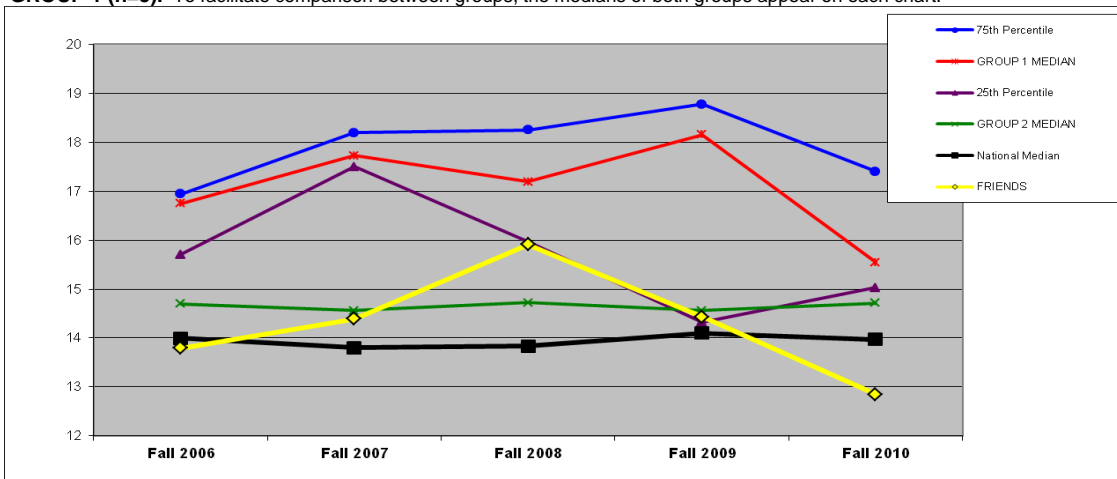
Council of Independent Colleges Comparisons

STUDENT/FACULTY RATIO: BY COMPARISON GROUP (6G)

DEFINITION: Total 12-month student full-time equivalent (FTE) enrollment divided by instructional faculty FTE.

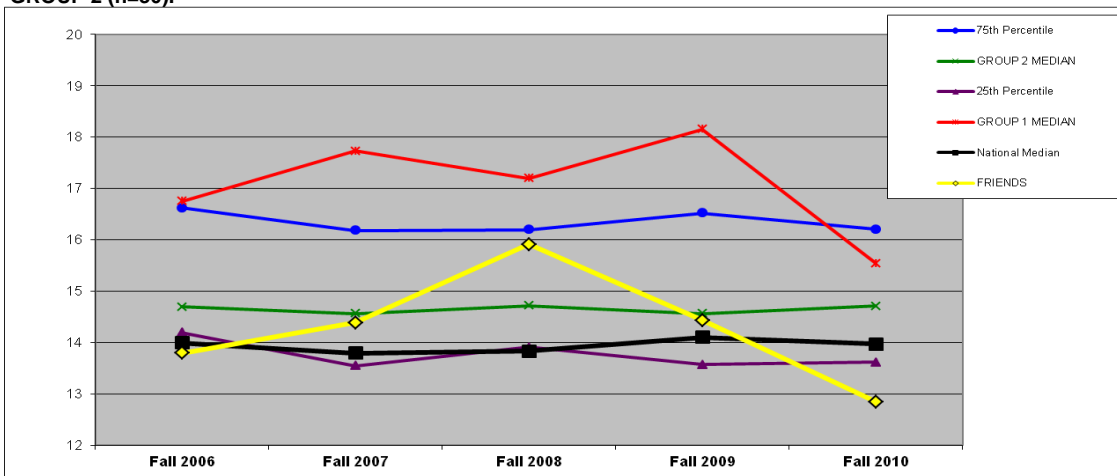
	Fall 2006	Fall 2007	Fall 2008	Fall 2009	Fall 2010	Y1 to Y5 Change
FRIENDS	13.8	14.4	15.9	14.4	12.8	-6.9%

GROUP 1 (n=5). To facilitate comparison between groups, the medians of both groups appear on each chart.



	Fall 2006	Fall 2007	Fall 2008	Fall 2009	Fall 2010	Y1 to Y5 Change
75th Percentile	16.9	18.2	18.3	18.8	17.4	2.8%
GROUP 1 MEDIAN	16.7	17.7	17.2	18.2	15.5	-7.2%
25th Percentile	15.7	17.5	16.0	14.3	15.0	-4.3%
GROUP 2 MEDIAN	14.7	14.6	14.7	14.6	14.7	0.1%
National Median	14.0	13.8	13.8	14.1	14.0	-0.2%
FRIENDS	13.8	14.4	15.9	14.4	12.8	-6.9%

GROUP 2 (n=30).



	Fall 2006	Fall 2007	Fall 2008	Fall 2009	Fall 2010	Y1 to Y5 Change
75th Percentile	16.6	16.2	16.2	16.5	16.2	-2.5%
GROUP 2 MEDIAN	14.7	14.6	14.7	14.6	14.7	0.1%
25th Percentile	14.2	13.5	13.9	13.6	13.6	-4.1%
GROUP 1 MEDIAN	16.7	17.7	17.2	18.2	15.5	-7.2%
National Median	14.0	13.8	13.8	14.1	14.0	-0.2%
FRIENDS	13.8	14.4	15.9	14.4	12.8	-6.9%

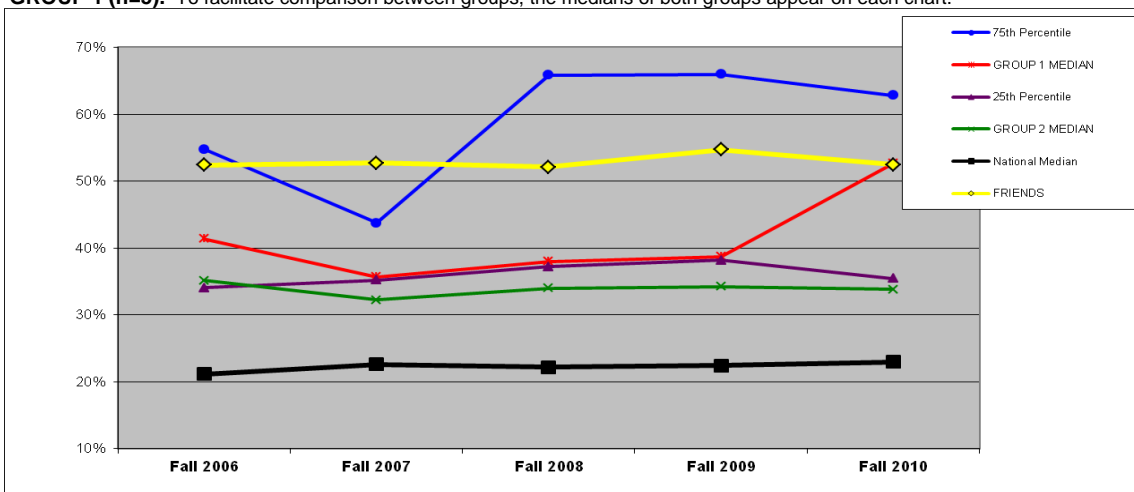
Council of Independent Colleges Comparisons

PART-TIME FACULTY (%): BY COMPARISON GROUP (7G)

DEFINITION: Full-time equivalent (FTE) for part-time instructional faculty as a percentage of total instructional faculty FTE.

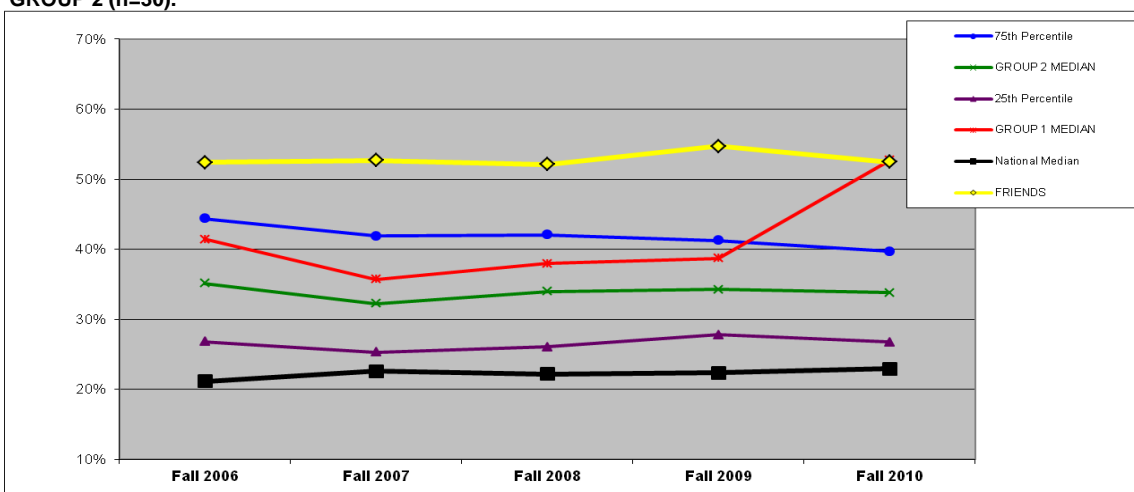
	Fall 2006	Fall 2007	Fall 2008	Fall 2009	Fall 2010
FRIENDS	52.4%	52.7%	52.1%	54.7%	52.5%

GROUP 1 (n=5). To facilitate comparison between groups, the medians of both groups appear on each chart.



	Fall 2006	Fall 2007	Fall 2008	Fall 2009	Fall 2010
75th Percentile	54.8%	43.8%	65.9%	66.0%	62.8%
GROUP 1 MEDIAN	41.4%	35.7%	38.0%	38.7%	52.7%
25th Percentile	34.0%	35.2%	37.2%	38.2%	35.5%
GROUP 2 MEDIAN	35.1%	32.2%	34.0%	34.2%	33.8%
National Median	21.2%	22.6%	22.2%	22.4%	23.0%
FRIENDS	52.4%	52.7%	52.1%	54.7%	52.5%

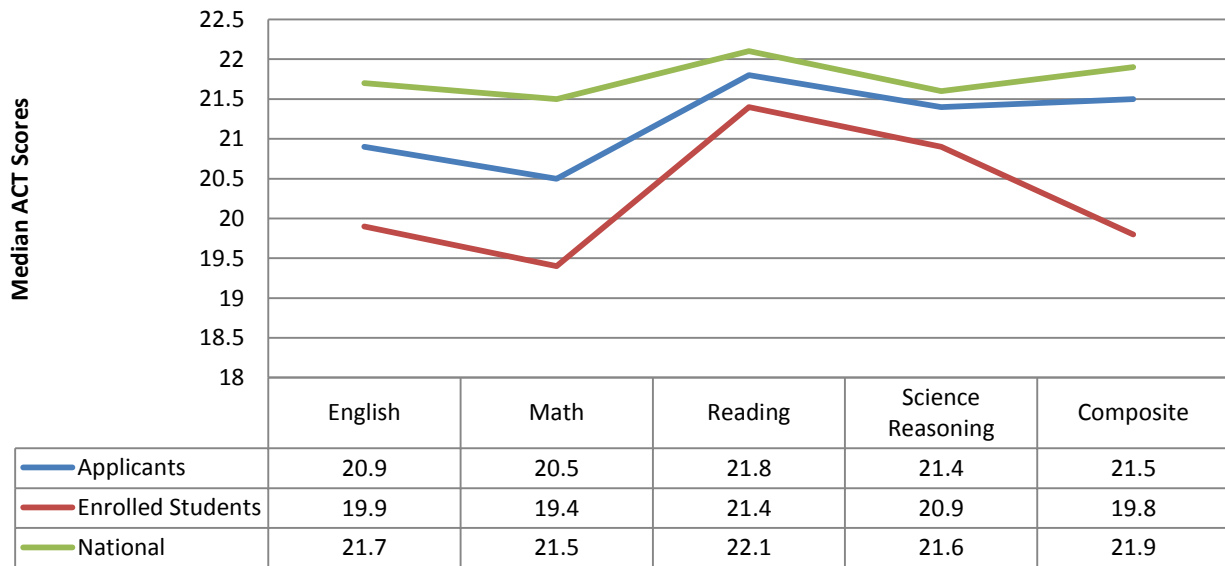
GROUP 2 (n=30).



	Fall 2006	Fall 2007	Fall 2008	Fall 2009	Fall 2010
75th Percentile	44.4%	41.9%	42.0%	41.2%	39.7%
GROUP 2 MEDIAN	35.1%	32.2%	34.0%	34.2%	33.8%
25th Percentile	26.8%	25.3%	26.1%	27.8%	26.8%
GROUP 1 MEDIAN	41.4%	35.7%	38.0%	38.7%	52.7%
National Median	21.2%	22.6%	22.2%	22.4%	23.0%
FRIENDS	52.4%	52.7%	52.1%	54.7%	52.5%

ACT Profile

Friends University Entering Class 2010



Friends University Entering Class 2010

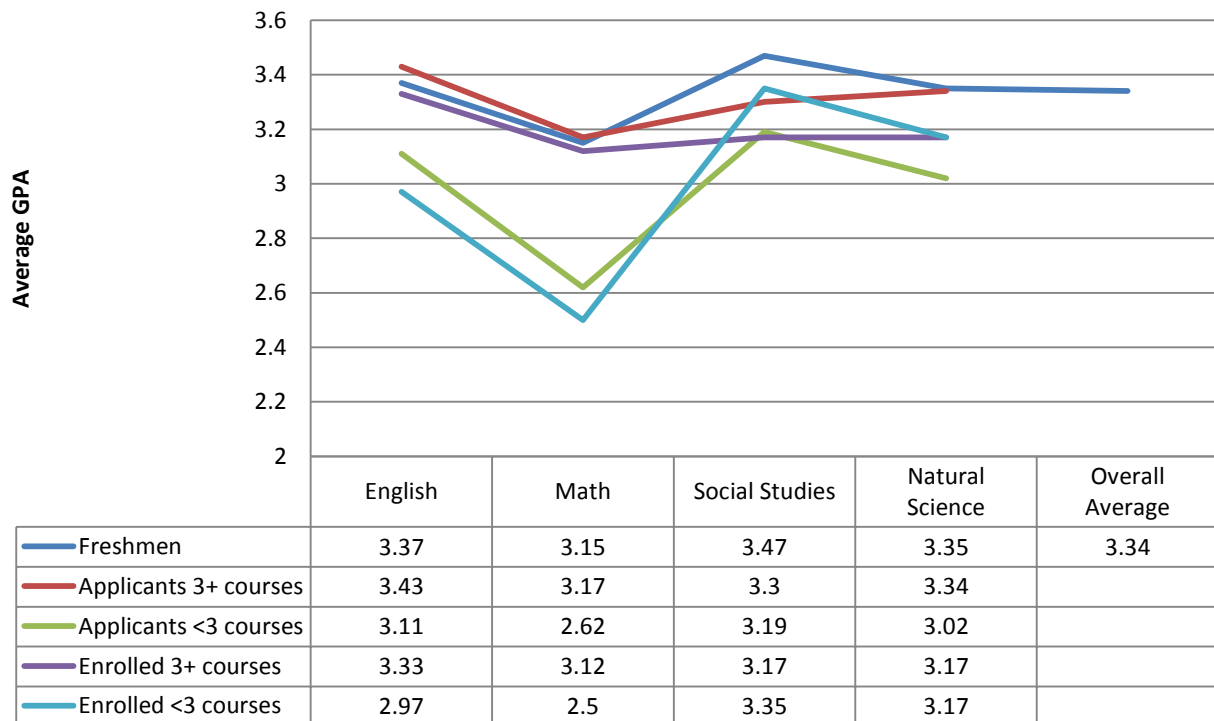


Figure S1. Six-Year Outcomes by Enrollment Intensity

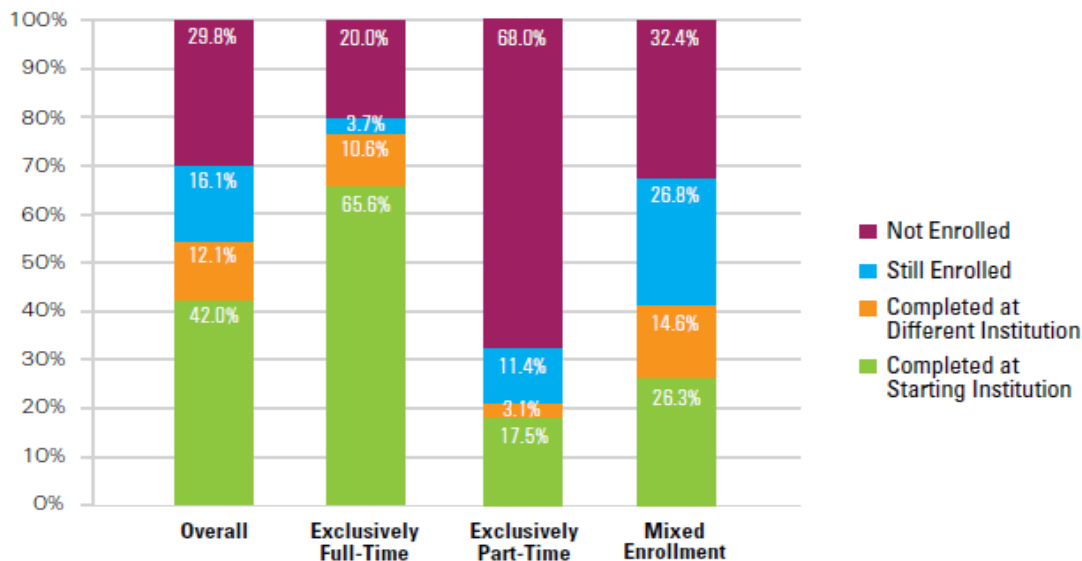
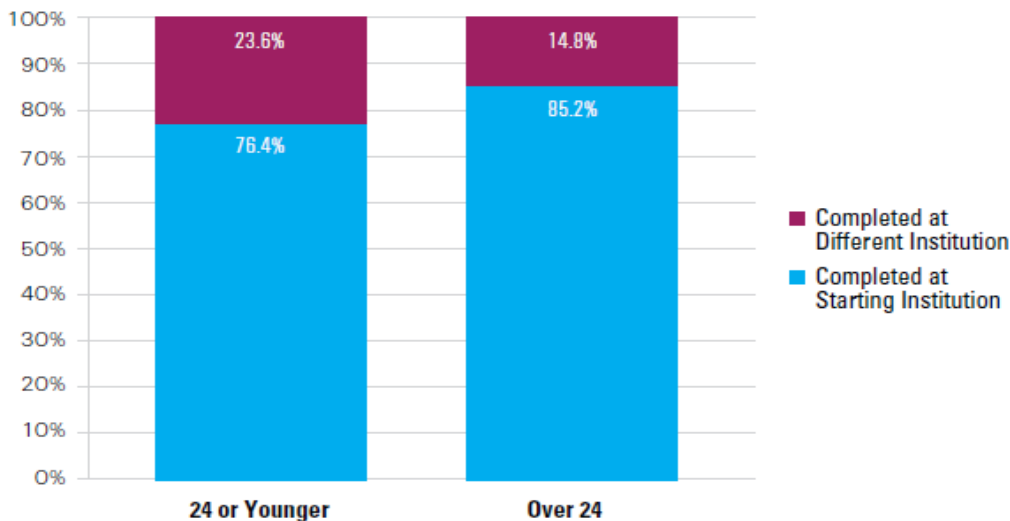


Figure S2. Completion at Starting vs. Different Institution by Age at First Entry



COMPLETION RATES FOR ADULT LEARNERS

Gains in completion rates from graduations elsewhere were greater for students who started college at age 24 or younger than they were for students who started when they were over age 24 (13 percentage points and 6 percentage points, respectively). It should be noted that while adding completions beyond the starting institution increased the completion rate for students over age 24 ($n=327,487$), a large gap remained between the completion rates of younger and older students, with the latter group having a much lower overall six-year completion rate (56.8 percent vs. 42.1 percent, respectively). Furthermore, by the end of the study period, 44.4 percent of the older students were not enrolled anywhere (i.e., had stopped out of college), compared to 26.4 percent of the younger students.

National Student Clearinghouse Research Center

Figure 6. Six-Year Outcomes by Starting Institution Type*

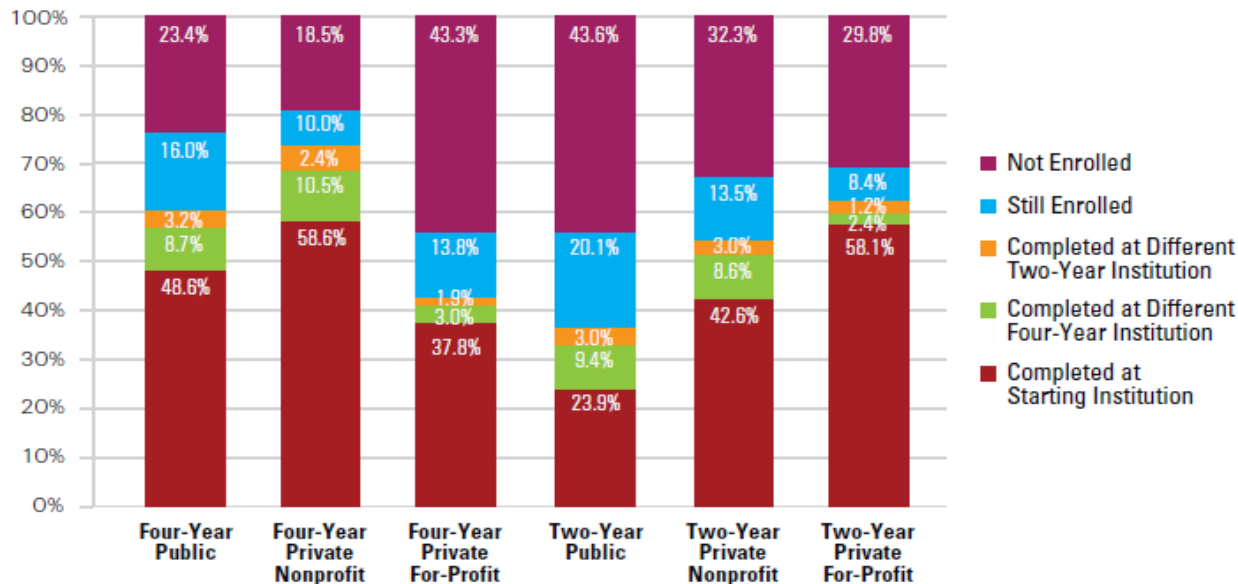
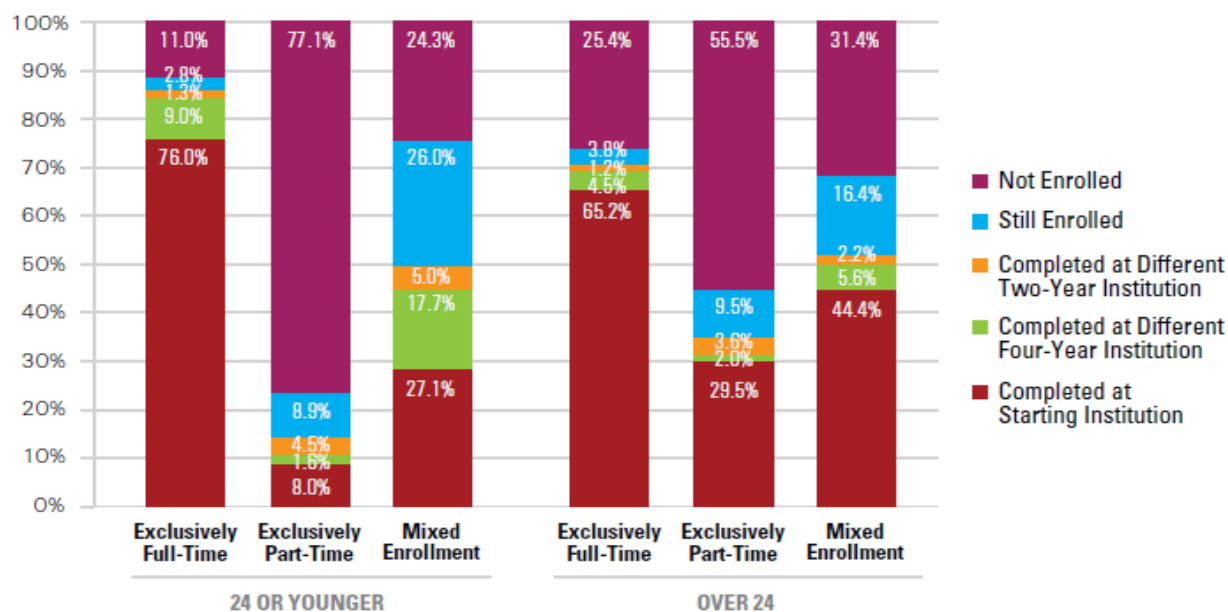


Figure 19. Six-Year Outcomes for Students Who Started at Four-Year Private Nonprofit Institutions by Age at First Entry and Enrollment Intensity*



Higher Education Research Institute/Cooperative Institutional Research Program

Table 1. Four-, Five-, and Six-Year Degree Attainment Rates, by Institutional Type

Institutional Type	Weighted Percent Completing Bachelor's Degree Within		
	4 Years	5 Years	6 Years
Public University	37.1	59.8	65.6
Private University	64.0	75.9	78.2
Public 4-Year College	23.5	43.1	49.5
Nonsectarian 4-Year College	48.7	59.3	61.8
Catholic 4-Year College	54.1	64.0	66.0
Other Religious 4-Year College	47.8	56.3	57.9

Table 4. Six-Year Degree Attainment Rates, by Race/Ethnicity and Institutional Type

Racial/Ethnic Group	Institutional Type					
	Public University	Private University	Public 4-Year College	Nonsectarian 4-Year College	Catholic 4-Year College	Other Religious 4-Year College
African American	46.7	67.9	36.2	40.0	44.2	38.3
American Indian	45.1	79.0	26.9	46.2	37.9	38.8
Asian/Pacific Islander	76.4	85.2	54.8	73.4	72.6	55.7
Latina/o	57.7	70.3	38.6	60.0	53.9	44.2
White	66.9	79.4	55.3	65.2	69.4	60.4
Multiracial	60.8	73.2	43.6	55.8	59.2	51.1
Other	63.1	73.2	48.6	62.9	58.4	56.7

Figure 8. Weighted Four-Year Predicted and Actual Degree Attainment Rates, by Institutional Type

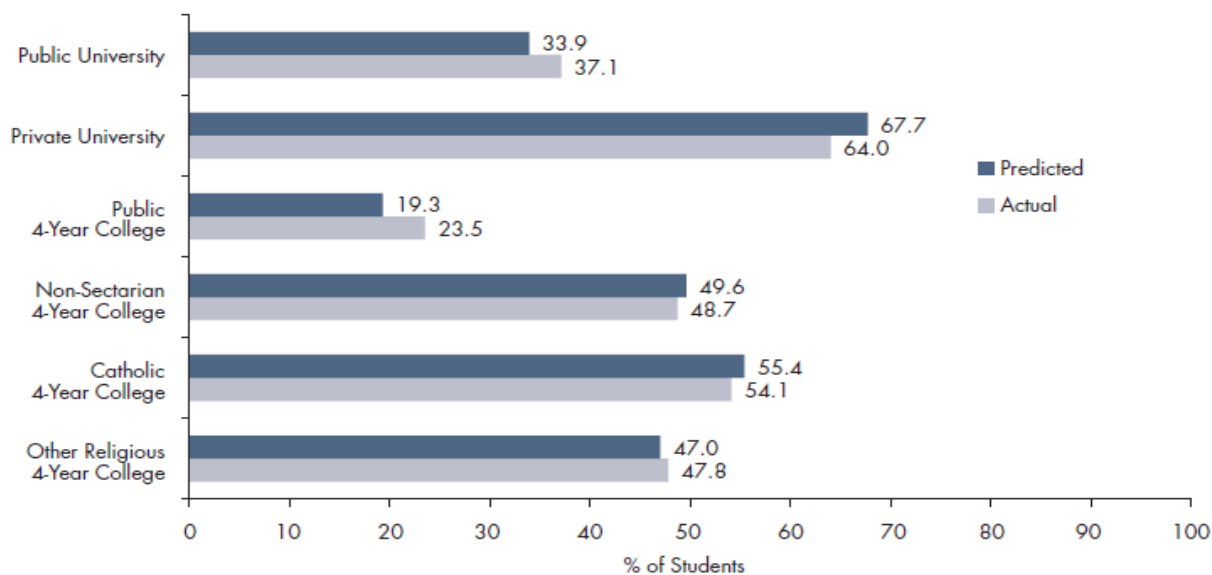


Table 5. Four-, Five-, and Six-Year Degree Attainment Rates, by High-School Grade Average

High-School Grade Average	Weighted Percentage of Students Who Received Bachelor's Degrees Within		
	4 Years	5 Years	6 Years
A+, A	58.3	75.6	79.3
A-	47.8	66.3	70.6
B+	35.9	54.7	59.8
B	25.2	43.3	48.7
B-	15.5	30.5	36.6
C+	9.8	22.4	27.7
C or less	6.3	16.0	21.2

Table 6. Four-, Five-, and Six-Year Degree Attainment Rates, by SAT Composite Score

SAT Composite Score	Weighted Percentage of Students Who Received Bachelor's Degrees Within		
	4 Years	5 Years	6 Years
1300+	62.2	78.2	81.6
1200–1299	51.9	69.5	73.3
1100–1199	42.9	61.2	65.6
1000–1099	34.8	53.7	58.6
900–999	24.6	44.0	49.9
800–899	17.2	34.1	40.5
Less than 800	10.5	23.9	30.4

Converting ACT Composite Scores* to SAT Critical Reading and Mathematics Equivalents

ACT Composite	SAT Critical Reading + Mathematics
12	660
13	690
14	730
15	760
16	800
17	850
18	900
19	950
20	980
21	1020
22	1050
23	1090
24	1130
25	1160
26	1200
27	1240
28	1280
29	1320
30	1360
31	1410
32	1460
33	1510
34	1550
35	1590

*The ACT Composite is the average of scores on English, Reading, Mathematics, and Science Reasoning

Table 1: FTIC Enrollment—Fall 2010 Versus Fall 2009

	2-Year Public	4-Year Public	Small 4-Year Public	Large 4-Year Public	4-Year Private	Small 4-Year Private	Large 4-Year Private
25th percentile	-7.0%	-0.1%	-3.2%	0.8%	-0.7%	-0.7%	-0.7%
Median change	2.0%	3.9%	3.5%	5.2%	6.9%	11.0%	4.4%
75th percentile	6.0%	9.0%	18.5%	7.8%	15.5%	18.9%	11.2%

Table 2: Transfer Student Enrollment—Fall 2010 Versus Fall 2009

	2-Year Public	4-Year Public	Small 4-Year Public	Large 4-Year Public	4-Year Private	Small 4-Year Private	Large 4-Year Private
25th percentile	-14.5%	-0.6%	-3.5%	-0.4%	-9.0%	-6.5%	-10.3%
Median change	1.6%	3.8%	4.0%	2.8%	5.2%	8.1%	0.1%
75th percentile	10.5%	12.9%	16.4%	10.5%	19.6%	21.0%	17.5%

Table 3: First-to-Second-Year Retention—Fall 2010 Versus Fall 2009

	2-Year Public	4-Year Public	Small 4-Year Public	Large 4-Year Public	4-Year Private	Small 4-Year Private	Large 4-Year Private
25th percentile	-1.9%	-1.3%	-2.9%	-0.7%	-1.4%	-2.5%	-1.3%
Median change	0.3%	0.6%	0.4%	0.6%	0.7%	1.3%	0.0%
75th percentile	5.0%	2.0%	2.1%	2.0%	4.3%	7.4%	2.2%

Desire of fall 2011 incoming freshmen to finish a degree vs. degree completion rates by institutional type

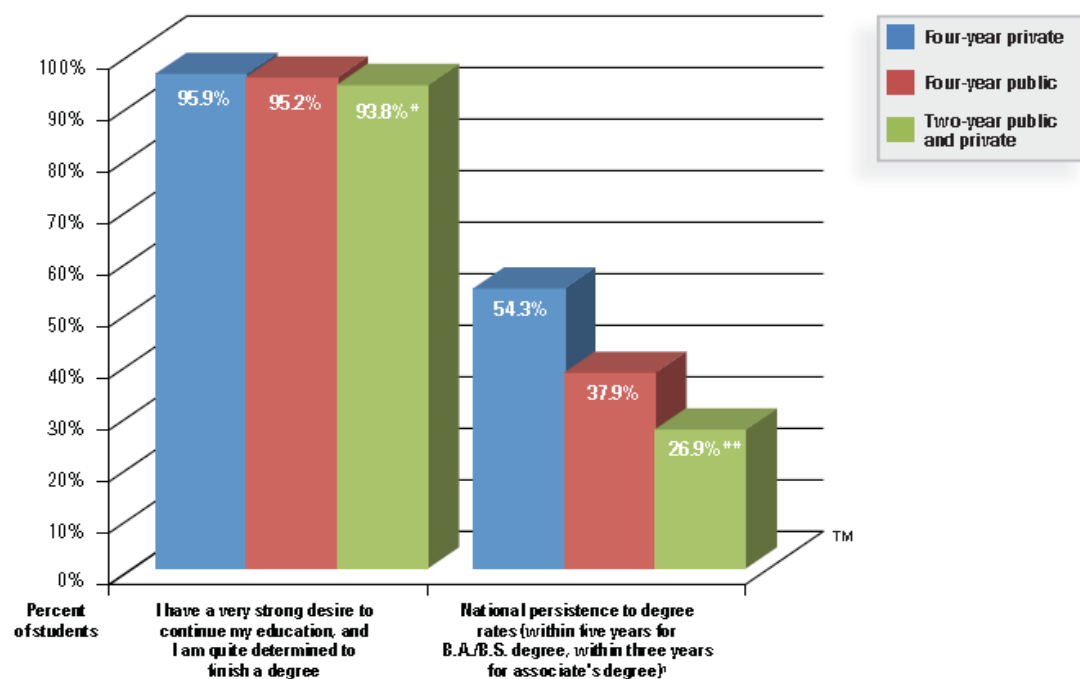
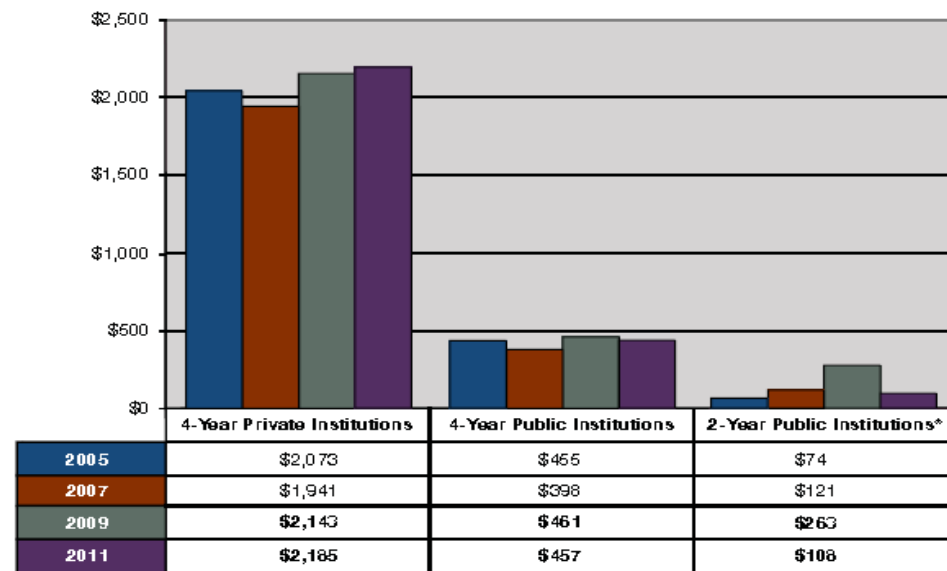


Table 1: Median cost to recruit a single undergraduate student, 2005-2011

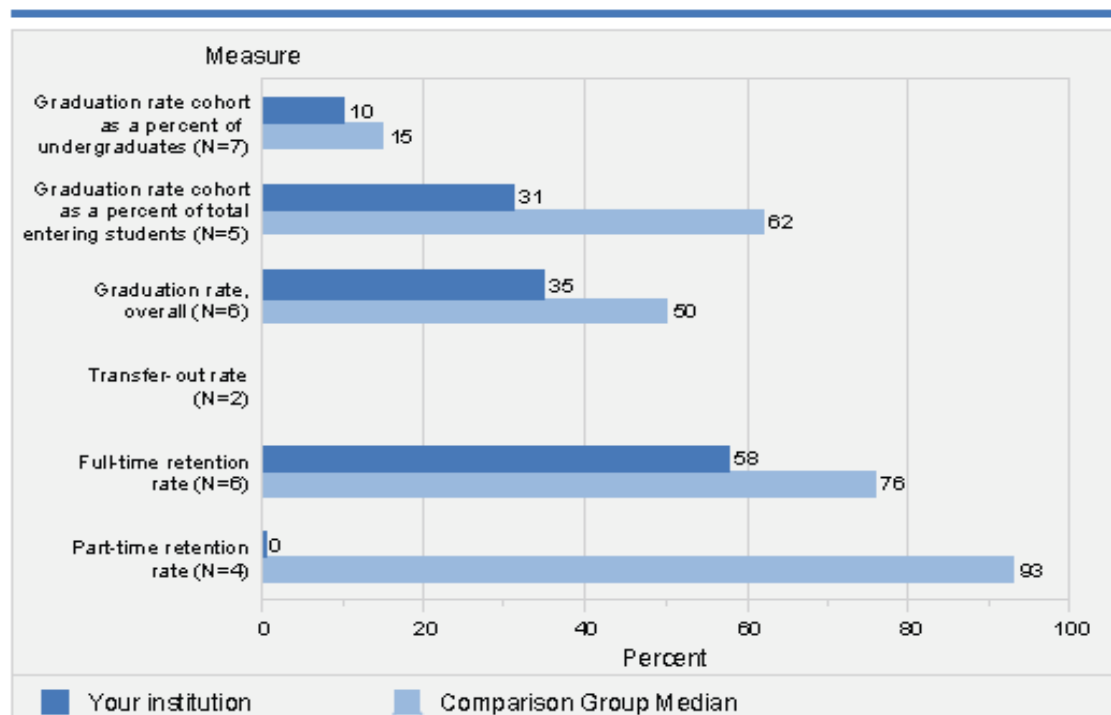


IPEDS

The custom comparison group chosen by Friends University includes

- ▶ Baker University (Baldwin City, KS)
- ▶ Central Methodist University-College of Graduate & Extended Studies (Fayette, MO)
- ▶ Central Methodist University-College of Liberal Arts & Sciences (Fayette, MO)
- ▶ Colorado Christian University (Lakewood, CO)
- ▶ Elmhurst College (Elmhurst, IL)
- ▶ Southern Nazarene University (Bethany, OK)
- ▶ University of Mary (Bismarck, ND)

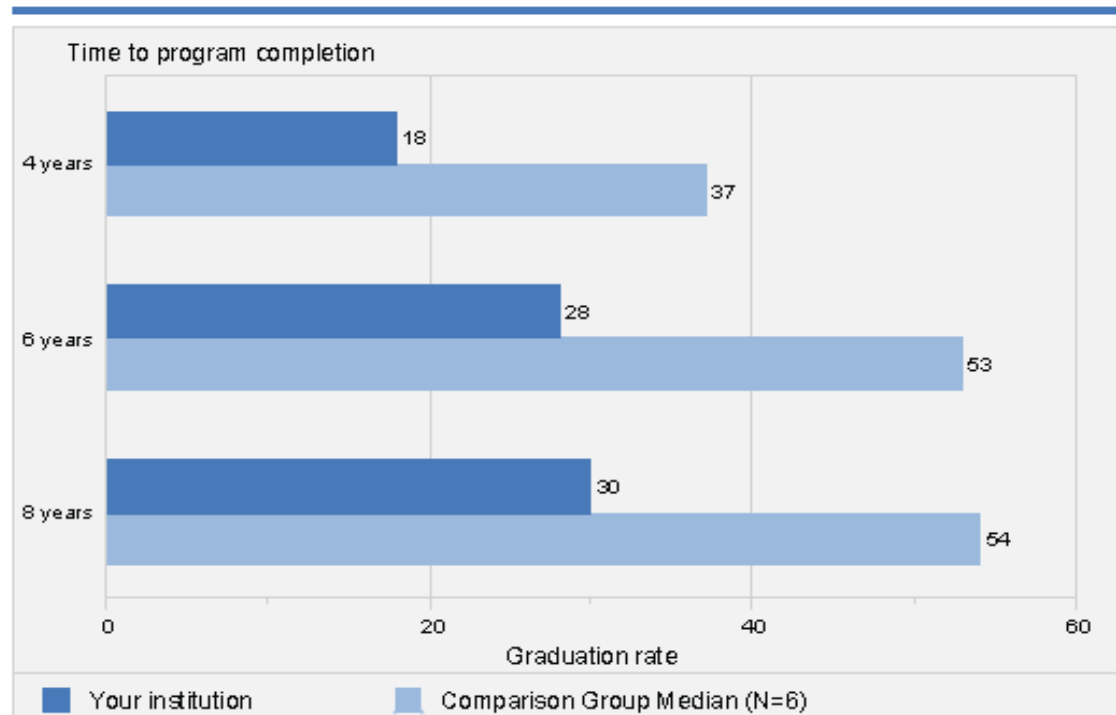
Graduation rate cohort as a percent of all undergraduates and as a percent of total entering students (Fall 2009); graduation rate and transfer-out rate (2003 cohort); and retention rates (Fall 2009)



NOTE: Graduation rate cohort includes all full-time, first-time, degree/certificate-seeking undergraduate students. Entering class includes all students coming to the institution for the first time. Only institutions with a mission to prepare students to transfer are required to report transfers out. Graduation and transfer-out rates are the Student Right-to-Know rates. Retention rates are measured from the fall of first enrollment to the following fall. 4-yr institutions report retention rates for students seeking a bachelor's degree. Median values for the comparison group will not add to 100 percent. N is the number of institutions in the comparison group. Medians are not reported for comparison groups with less than three values.

IPEDS

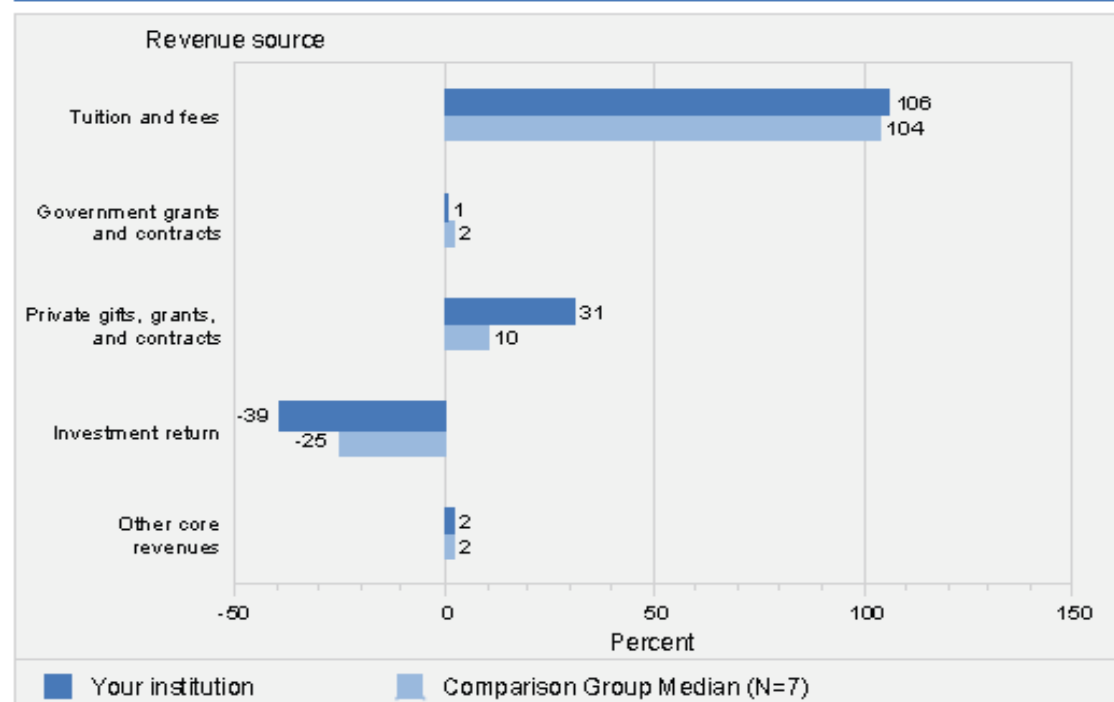
Bachelor's degree graduation rates of full-time, first-time, degree/certificate-seeking undergraduates within 4 years, 6 years, and 8 years: 2001 cohort



NOTE: The 6-year graduation rate is the Student Right-to-Know (SRK) rate; the 4- and 8-year rates are calculated using the same methodology. For more information see the Methodological Notes at the end of the report. N is the number of institutions in the comparison group.

IPEDS

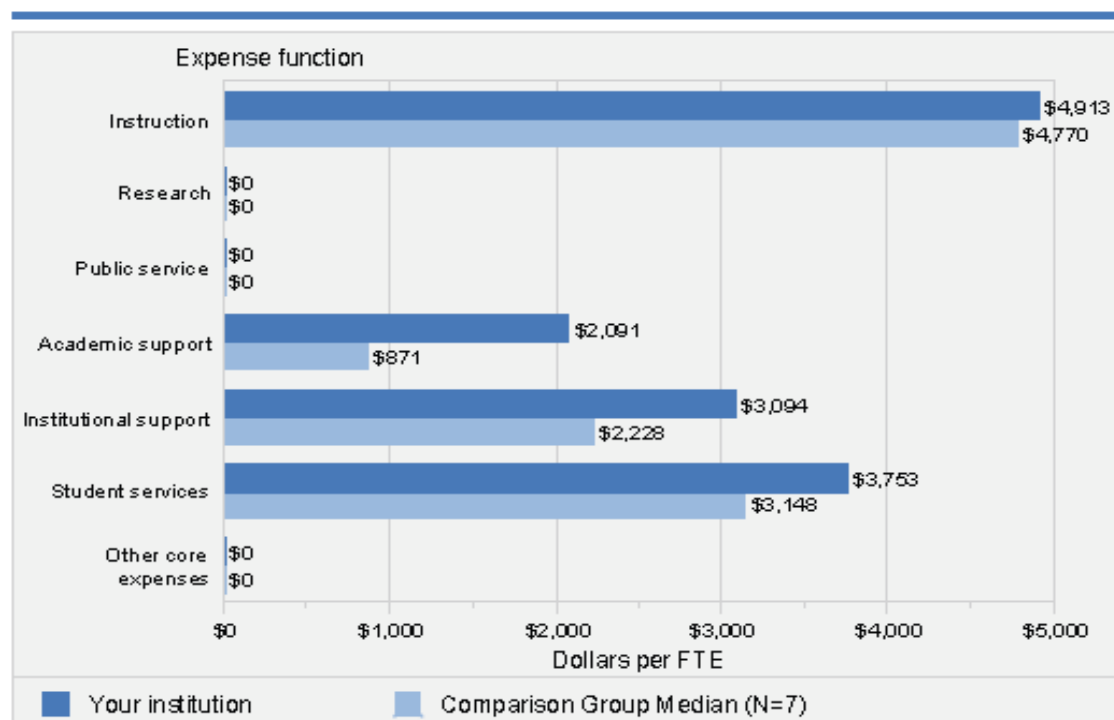
Percent distribution of core revenues, by source: Fiscal year 2009



NOTE: The comparison group median is based on those members of the comparison group that report finance data using the same accounting standards as the comparison institution. For a detailed definition of core revenues, see the Methodological Notes. N is the number of institutions in the comparison group.

IPEDS

Core expenses per FTE enrollment, by function: Fiscal year 2009



NOTE: The comparison group median is based on those members of the comparison group that report finance data using the same accounting standards as the comparison institution. Expenses per full-time equivalent (FTE) enrollment, particularly instruction, may be inflated because finance data includes all core expenses while FTE reflects credit activity only. For details on calculating FTE enrollment and a detailed definition of core expenses, see the Methodological Notes. N is the number of institutions in the comparison group.

A Profile of Freshmen at 4-Year Colleges, Fall 2010

SOURCE: "THE AMERICAN FREEDMAN NATIONAL INDEX 1987-1990,"
OF CALIFORNIA AT LOS ANGELES HIGHER EDUCATION STUDY AND RESEARCH

Private Nonprofit 4-Year Institutions Reported Highest Graduation Rates in 2009

Across gender and racial groups, private nonprofit institutions reported the highest percentages of full-time, first-time students who earned bachelor's degrees within six years of enrolling in the fall of 2003. Rates were significantly lower at for-profit colleges, where many students are educationally and financially disadvantaged. Rates for men and for black and Hispanic students also lagged.

Graduation rates for the six-year period 2003-9, by institution type and region

	All students	Men	Women	American Indian	Asian	Black	Hispanic	White	Nonresident foreign
All 4-year institutions	57%	55%	60%	38%	68%	39%	49%	61%	53%
Private nonprofit	65%	62%	67%	48%	76%	45%	59%	68%	69%
Public	56%	53%	58%	37%	66%	39%	47%	59%	56%
For-profit	20%	22%	19%	12%	31%	16%	25%	24%	9%
Institution type									
Research-intensive, private nonprofit	83%	82%	84%	76%	88%	71%	81%	85%	84%
Research-intensive, public	65%	62%	67%	47%	73%	49%	56%	67%	65%
Doctoral research, private nonprofit	63%	61%	65%	55%	68%	50%	55%	67%	62%
Doctoral research, public	48%	44%	51%	39%	48%	37%	36%	52%	46%
Master's, private nonprofit	59%	56%	62%	44%	61%	41%	50%	63%	53%
Master's, public	46%	42%	50%	32%	49%	32%	38%	51%	45%
Baccalaureate arts & sciences, private nonprofit	72%	69%	74%	60%	80%	49%	67%	74%	75%
Baccalaureate arts & sciences, public	48%	50%	47%	30%	48%	42%	38%	51%	47%
Baccalaureate diverse, private nonprofit	48%	42%	52%	25%	49%	30%	37%	53%	51%
Baccalaureate diverse, public	40%	40%	40%	23%	40%	29%	27%	44%	37%
Historically black colleges and universities	34%	28%	39%	21%	29%	34%	30%	27%	41%
Region									
New England ¹	66%	64%	68%	57%	77%	55%	63%	66%	75%
Midwest ²	65%	62%	67%	55%	70%	47%	53%	68%	64%
Far West ³	62%	60%	64%	47%	70%	48%	53%	65%	54%
Great Lakes ⁴	58%	56%	60%	45%	68%	34%	49%	61%	64%
Plains ⁵	57%	54%	60%	23%	60%	37%	47%	59%	52%
Southeast ⁶	53%	50%	56%	43%	64%	39%	54%	57%	54%
Rocky Mountain ⁷	51%	49%	53%	30%	53%	34%	40%	54%	44%
Southwest ⁸	43%	41%	45%	32%	57%	25%	38%	50%	28%

- 1 Conn., Me., Mass., N.H., R.I., Vt.
- 2 D.C., Del., Md., N.J., N.Y., Pa.
- 3 Alaska, Calif., Hawaii, Nev., Ore., Wash.
- 4 Ill., Ind., Mich., Ohio, Wis.
- 5 Iowa, Kan., Minn., Mo., Neb., N.D., S.D.
- 6 Ala., Ark., Fla., Ga., Ky., La., Miss., N.C., Tenn., Va., W.Va.
- 7 Colo., Idaho, Mont., Utah, Wyo.
- 8 Ariz., N.M., Okla., Tex.

Chronicle of Higher Education Almanac 2011-2012

Average scores on the ACT by sex and race/ethnicity, 2011

	English	Mathematics	Reading	Science	Composite score	Change since 2007 in composite score
Men	20.2	21.6	21.1	21.4	21.2	n/a
Women	20.9	20.6	21.4	20.5	21.0	n/a
Asian	22.8	25.1	22.9	23.1	23.6	1.0
White	22.1	22.1	22.7	22.1	22.4	0.3
Two or more races	20.7	20.7	21.6	20.9	21.1	0.1
Native Hawaiian/Other Pacific Islander	18.6	19.9	19.4	19.5	19.5	n/a
Hispanic/Latino	17.6	19.2	18.9	18.8	18.7	0.0
American Indian/Alaska Native	17.5	18.6	19.1	18.9	18.6	-0.3
Black/African-American	15.9	17.2	17.0	17.1	17.0	0.0
Prefer not to respond/No response	20.2	20.9	21.0	20.4	20.7	-1.0
All students	20.6	21.1	21.3	20.9	21.1	-0.1

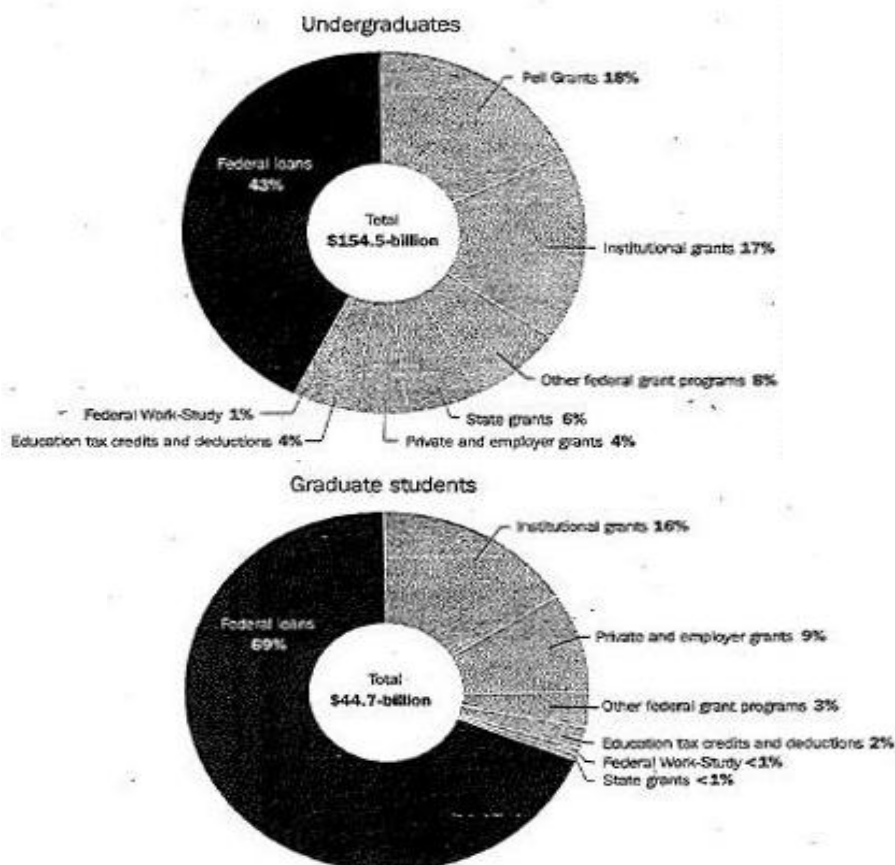
Note: The ACT exam is scored on a scale from 1 to 36. The designation "n/a" means data were not available.

SOURCE: ACT

Graduate Students Rely More on Federal Loans Than Do Undergraduates

Student-aid revenues and expenditures, 2009-10

HOW THE AID WAS FINANCED



Index

Topic	Page Number(s)
ACT Scores	6, 24, 28, 37
Adult Learner	25, 26
Application/Admissions	6, 12, 19
Comparison Group Identification, CIC	7-8
Comparison Group Identification, IPEDS	31
Comparison Group identification, KICA	3
Comparison Group Identification, NCES	3
Degrees Awarded	7
Discount Rate	16
Endowment	16
Expenses, Core Operating	5
Expenses, per student	17, 30, 34
Faculty Salaries	10-11
Freshman Profile Fall 2010	35
Graduation Rate	7, 13, 21, 25, 26, 27, 29, 31, 32, 36
High School GPA	24, 28
Institutional Aid per student	14-15
Part Time Faculty %	10, 23
Retention Rate	7, 13, 20, 29, 31
Revenue, Core	33
Revenue, Tuition per student	15
Student Debt	2, 37
Student Enrollment, Continuing	4
Student Enrollment, Ethnicity	4
Student Enrollment, First Time in College (cohort)	4, 12, 29
Student Enrollment, Graduate	4
Student Enrollment, Non Degree Seeking	4
Student Enrollment, Total	4, 12, 18
Student Enrollment, Transfer	4, 29
Student Enrollment, Undergraduate	4
Student/Faculty Ratio	5, 10, 22
Tuition	14, 16